



USER MANUAL

ABC6 ACCOUNTS

VERSION 6.46 (August 2015)

Intentionally left almost blank

Foreword

Most software these days comes with no printed documentation; just help files online. But for unskilled users getting to grips with an accounting system we think it much easier to have a book open next to the computer so you can refer to it and pencil notes in the margin.

So with ABC we have provided this User Manual on paper. It contains notes to get you started, and reminders for day to day operation. We have also supplied a vast amount of other stuff -- Reference Manual, Technical Notes, Training Guide, etc that installs onto your computer and is available on screen from within ABC. I hope this gives you the best of both worlds.

Chris Hicks

chris@abc6.co.uk

(Do email me if you have any suggestions for improving this manual. I welcome feedback and criticism.)

Copyright
© 2007- 2015

ABC Software retains sole copyright and title to these programs and documentation. All rights are reserved.

You are granted a non-exclusive and non-transferable licence to operate this software on a single computer for your own use.

No distributor dealer or agent is authorised to change these terms.

Warning: Limited
Liability

It is impossible for anyone to guarantee that a complex computer program is free of small faults (bugs). In addition the results produced by a program depend on the information entered at the keyboard; and the correct operation of the computer system.

ABC Software and their agents and distributors can accept no liability for the use of this program or any direct or indirect consequential damages arising from the use of this program. It is the responsibility of the user of the program to check that this program is suitable for their requirements; that it is installed correctly; and that any results of its use are correct.

Credits

Design supervisor: Chris Hicks.

Production details

The ABC programs are mostly written in Microsoft Visual Basic. This Manual was prepared using Adobe InDesign. Manual v1.08 Printed in England. August 2015

FEEDBACK and
Contact Details

We are keen to hear your comments, bug reports, complaints, and ideas for improvements (preferably by email).

ABC Software

Cedarwood, Appleton Hall Gardens,
Warrington WA4 5NE, UK

Tel: 01925-491933

email: feedback@abc6.co.uk

website: www.abc6.co.uk

Contents

1 Introduction

What ABC can do	1
After-Sales Support	2
How to use This Manual	2
How to drive ABC, The Main Menu	6
On screen HELP	7
Starting up ABC, Log-In, Passwords	8
Registration Key, Close down (exit) ABC	8
Get started with bookkeeping.	10
A typical months bookkeeping	11

2 Getting started

Setting up the Accounts	13
Set up some Analysis Headings	15
Analysis Heading Groups	16
Analysis Heading Numbers	17
Clear the Accounts Files, Set accounts Year and Folio nbrs	18
Set-up Customers and Suppliers	19
Check the VAT rates	21
VAT General notes	22
Notes for the VAT Inspector.	23
Import from ABC5	24

3 Record cards

Customer and Supplier Records	26
Details of each Field	27
Purchase Orders (optional extra module)	27
Hide or show Inactive Records	29
Analysis Heading Records	30
Details of each Field	31
Stock Record Cards	33
Details of each Field	34

4 Transactions

Different types of transaction39
Money Received for an invoice (Sales Ledger)41
Money Received for a Cash Sale.45
Money Paid for a Purchase Ledger Invoice47
Money Paid for a Cash Purchase (petty cash)51
Internal adjustments/movements.53
Bankings53
Bank Reconciliation54
Opening Balance to Customer or Supplier54
Opening Balance to Nominal Ledger54
Nominal Ledger Transfers (Journal entries).55
Stock (Inventory) transactions..57
Unpaid bills (purchase invoices)58
Sales Invoices60
Credit Notes..63
Delivery Advice Note63
Link to the Stock File64
Corrections and Adjustments64

5 Printing reports

Sales Ledger (Customer) reports66
Purchase Ledger (Supplier) reports67
Stock (Inventory) reports.69
Nominal Ledger reports70
VAT reports (VAT Return, and Audit)..71
Online VAT Returns.71
CashBook reports72
Design your own reports72

6 Month & Year End

Run the Month End73
End of Year75
Letter to the Accountant76

7 Customise ABC

Company name and address77
Logo (picture) for top of reports77
Accounting Year78
Folio & Invoice Numbers78
Options -- User Interface for experts..78
Stock System settings..78
Passwords.79
Other Companies..80
Customise the look of the screen80

8 FILING

Open a File81
Customise a File82
Import or Export data.84
Global Changes85
Design your own Reports86
Label printing89

9 TYPING

Edit text91
Mail-merge93

10 Spread Sheet

Formula96
Link to Nominal Ledger (Headings)97
Import/Export98

11 Useful extras

Noticeboard.99
Calculator99
Print Envelope	100
Yellow Notes.	100
Diary/Calendar.	100
Email functions	102

12 Backups and Snapshots

Make safe copies of your data	103
---------------------------------------	-----

13 Installation and Update

Install ABC onto your computer	105
Version number.	105
Registration Key, User Forum	105
Program updates	105

14 Reference

Enter a Date, or a Heading Code	107
Enter a Payment Method	108
Enter a VAT Code, or an amount of VAT	108
Find a Record	109
Apply a Filter to pick out Records you want, SQL	110
Edit a Record Card	110
A Grid (ie. Table) of data	115
Features of ABC reports	115
The Report viewer Toolbar, Report Options	116

15 Glossary

Technical words explained.. .. .	117
----------------------------------	-----

16 Trouble-shooting

Solutions to common problems	119
--------------------------------------	-----

17 INDEX

1

Introduction

An overview of ABC
and how to use this manual

What ABC can do

ABC is a computer program designed to help take care of the bookkeeping and paperwork in a small business. Guessing you are not an accountant, we have made ABC very easy to use.

In technical terms ABC is an accounts package that can also print labels, letters and lists. All the usual facilities are provided, including Sales Invoicing, Statements, Stock Control, VAT Returns, Cashbook, Profit & Loss Report, and Audit Trail. A Payroll module, Purchase Order Processing, Multi-user version ABC, and links to trade-specific software, are some of the optional extras available. We can also customise programs for you.

Computer Expert? or Beginner?

You may be new to computers and worried about which button to press. We have made the ABC program quite foolproof (though we know someone may invent a better fool). Everybody makes mistakes: it is easy to correct these later. ABC contains lots of features that you may think you do not need; ignore those to start with.

After a while you will become a computer expert and want to go faster. ABC contains many hidden short cuts for you.



Boxes like this contain hints, shortcuts, efficiency tips and suggestions.

After-Sales Support

A Newsletter is sent out at irregular intervals, containing ideas and suggestions collected from other users of this package.

Technical advice is available by letter or email. If you have paid for Support you normally will get an immediate reply, otherwise it may take a little longer.

After Sales Support can be purchased in periods of a month or a year. While your support is valid you have unlimited Telephone and email support, and free minor program updates (ABC can be set to automatically update itself). Your After Sales Support subscription can be viewed and renewed on our website, or you can pay by cheque or bank transfer.

An ABC User Forum (via our website -- [page 106](#)) allows you to discuss and comment on ABC with other users, and ask for help. This is free to use.

Independent consultants or ABC experts in various areas of the country provide after-sales support, training, telephone help lines, etc for a small annual fee.

If you have paid a local company for After-Sales Support, write their telephone number and address in this box for quick reference:

Your computer

ABC should be happy to run on any computer that has Windows XP, 7, 8, or 10 installed, and a few hundred megabytes of free disk space. Ideally your processor speed should be over 2GHz, and you will have at least 2GB of RAM. We strongly recommend you have some removable device for making backups (eg a USB stick).

Screen resolution ideally should be at least 1280x1024.

It should be possible to use any printer with ABC. If you need to use multi-part ncr sets ABC has an option to print invoices and statements on dot-matrix printers. -- [page 116](#)

How to use This Manual

This book is mainly a *How to* Guide briefly explaining day-to-day tasks, for example: how to produce a Sales Invoice.

General operation of the ABC program is hidden away towards the back of the book; and you'll find pointers to suitable page numbers if you need more explanation eg. [page 123](#)

It is assumed that you have a working knowledge of the Windows Operating System (if not, go and spend 10 minutes learning how to double-click a mouse, start and close a program, and drag the border of a window to change its size).

You may have a fear of boring technical manuals but Please, PLEASE, glance through the first couple of Chapters of this book to get an overview of ABC and see important step-by-step instructions for getting started with Bookkeeping.

Find your way around

Use the Contents List (at the front) or Index (at the back of this manual) to lookup the pages you require.

Technical words are explained in a Glossary [page 117](#)

Using mouse and keyboard

If you have used Windows for more than a few minutes you probably already know these basic principles -- in which case you can look smug as you skim through this section.

The mouse moves the mouse cursor on the screen. When the mouse cursor is over the item you want to activate, click the left mouse button (ie. press and release it).

To select some text, hold down the left mouse button as you move the mouse across the text -- this will highlight that section of text. Whatever text operation you choose now will be applied to the highlighted text only. Click the mouse anywhere else to cancel the selection.

You can usually change the size of windows, boxes and pictures on the screen by dragging their corners or sides. To do this, position the mouse

cursor over a corner or side of a box (the cursor will change shape to indicate the box is ready to be dragged). Then hold down the left mouse button and move the mouse to change the shape.

The right mouse button often produces a small popup menu of functions relevant to the item under the mouse cursor.

If your mouse has a wheel, this can be used for scrolling up and down.

While editing text, a text cursor will show your position in the text. The cursor keys can be used to move this around (or you can point to a new position with the mouse cursor and then left click the mouse to bring the text cursor to that position).

press ESC	means press the ESC key on the keyboard
click OK	means move the mouse cursor to the OK Button on screen, and click the left mouse button on it.
Enter FORMAT	means type the word format, then press the ENTER key
Double Click	press the left mouse button twice (quickly)

Hot Keys

Not everyone likes using the mouse all the time and it is possible to operate ABC most of the time using only the keyboard. This is faster and easier when entering items into bookkeeping but there are times when the mouse is useful.

To indicate to Windows that you are typing a special command, and not just another bit of text, you must press one of the command keys at the same time; usually the CTRL key or the ALT key. Possibly the most widely used keyboard shortcut is CTRL+C to Copy. (hold down the CTRL Key, and then also press the c Key)

Most buttons and menus can be operated by pressing the ALT key together with a letter of the alphabet. Look at the Menu or button: if one of the letters is underlined, that is the one that will activate it. For example, the File Menu can be activated by pressing ALT+F.

Here are some useful keyboard shortcuts (hot keys)

CTRL+C	Copy the selected item to the clipboard (eg. the highlighted section of text)
CTRL+V	Paste the item from the clipboard at the cursor position
F1	Press the F1 key for HELP
ESC	Press the ESC key to cancel or exit the operation.
F5	old ABC users are used to pressing F5 to Save (or Finish) the operation, so this still works in ABC6.

Close a window (exit)

The standard way to close a window (ie. finish with this operation) is to click the “X” at the top right hand corner of the window or tab.

However, sometimes ABC will not let you exit in this way. You might have begun entering an invoice. If you click the “X”, ABC needs to know if you want to cancel (discard) this work, or save it part finished; so before you can exit you need to click Save or Cancel.

This Manual is a rough guide

The user interface of ABC may change as we continue to work on the programs. And you can customise the appearance of many parts of ABC and Windows. This means that your screen might look different to the pictures in this Manual.

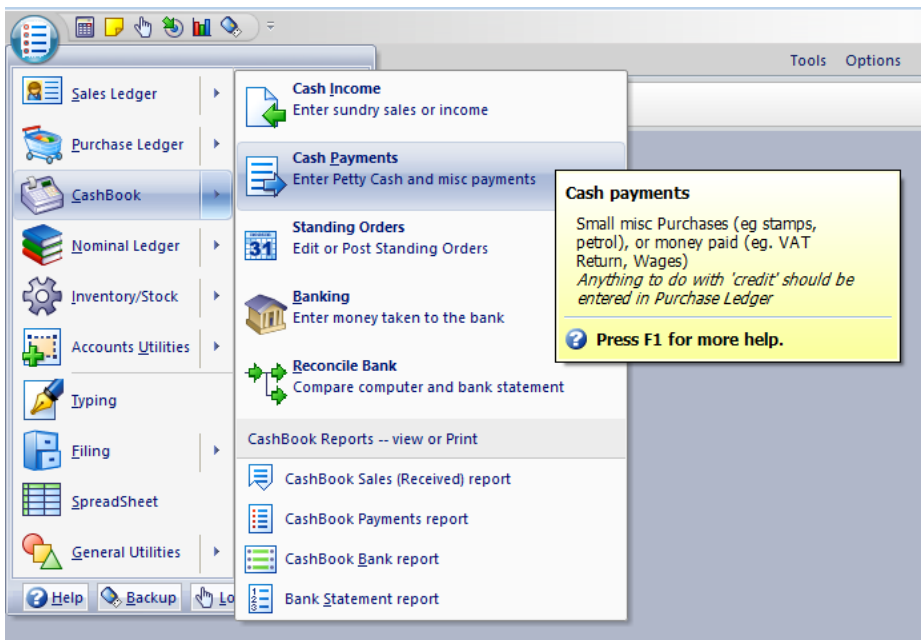
For this reason we have not shown many screenshots and have generally just pointed you in the right direction rather than giving exact step-by-step instructions. Hopefully this keeps the Manual thin, and avoids it going rapidly out of date.

How to drive ABC

You can use the keyboard and the mouse to operate ABC. In most cases either can be used, and there are often several ways to do something -- use whichever you find easiest.

The Main Menu

Just about everything in ABC can be reached from the Main Menu (pictured below). To display the Menu click the large round button top left of the screen (or press ALT+M).



Use the mouse or cursor keys to move around the Menu. Double-click the mouse or press the ENTER key to select a Menu item.

At the top left of the screen is a Quick Access Toolbar, and you can customise this to add any functions you use regularly. (To do this, right-click on a menu option and select Add To Quick Access Toolbar.)

Don't worry about accidentally selecting the wrong thing. ABC will make you confirm things like *Delete this Account*. If in doubt, select CANCEL or press ESC (the ESCAPE key).

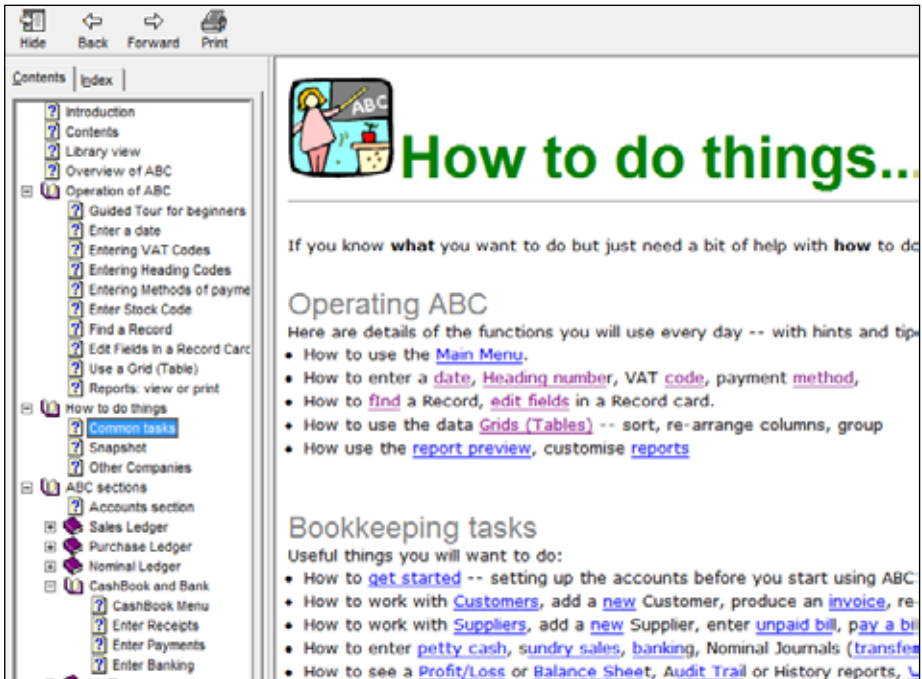
On screen HELP

ABC includes an on-screen Manual that you can view at any time: press the F1 key, or click a Help button, or select Help from a menu.

The on-screen Manual contains several Sections, including an Introduction, Reference Section, Beginner's Guide and Operator Notes. Each Section contains several Chapters. An example is shown below.

Help Pages contain links to other Help Pages: click on the underlined words to follow the link (and then click BACK if you want to get back to the previous page).

You can search the on-screen Manual by choosing Index or use Find to see all Pages containing the word(s) you are interested in.



While you are using ABC, if you request Help (press F1 or click Help) the program will usually be able to open the on-screen Manual at a relevant page (this is known as context sensitive Help).

The Help System remembers Pages you looked at recently, and you can use the Back and Forward keys to step through these Pages.

Starting up ABC

From Windows desktop click on the ABC icon

If the Password system is turned off, the Main Menu will appear. Otherwise you need to Log-On by entering your Password.

Log In to ABC

Enter your own password.



To set up or edit Passwords ([page 79](#))
ABC may ask for your Registration Key ([page 106](#))

The Noticeboard may appear; you can Continue, or Edit the messages. The NOTICEBOARD is a useful place to leave notes for the next person to use ABC.
You can turn it off ([page 99](#))

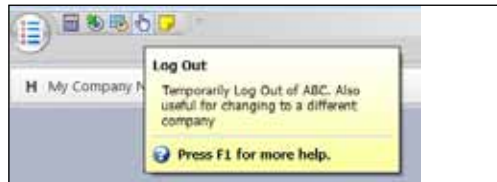
Close down ABC

Never switch off the computer without first closing down ABC.

Click the “X” (top right of Window) or select EXIT from bottom bar of Main Menu. Closing ABC ensures files are closed and all information has been written safely to disk.

Log Out of ABC

If you are just leaving the computer for a few minutes, you can Log Out (click the hand icon on Quick Access toolbar, or from Bottom bar of Main Menu). This stops anyone else playing with ABC while you are away (assuming you have Passwords turned On).



Change to different Company

If you have more than one set of accounts set up in ABC, to change to a different Company just Log Out, and then select the other Company.

Customise your ABC

Many parts of ABC can be changed to suit your own preferences, including screen colours, screen layout, passwords, report content and quick access Menus. The OPTIONS MENU (top right of the screen) has some of these functions.

Buttons at the bottom right of the screen will change the screen layout from multiple windows side-by-side, to having them one above another.

To add a function to the Quick Access toolbar (top left of screen) right click on an item on the Main Menu and select ADD TO QUICK ACCESS TOOLBAR.

Set your company details

You need to set your company name and other details before starting to use ABC for your real accounts. [Page 18 and 77](#)

Bottom left of the screen always shows the current bookkeeping month and accounts year start. If you use ABC for more than one company's books the current company name is displayed near the top left of the screen.

Other functions of ABC

ABC is unusual amongst Accounts packages because it also lets you write letters, produce labels, design your own reports, produce spreadsheets, etc. These are lightweight functions for simple tasks only. (If you also use MS Office you can probably ignore these ABC items; however it might be useful to know that the ABC functions are compatible with MS Office -- ie. you can load the ABC data into Office.)

Later chapters describe these features. Don't bother learning about things that you do not need. However, if you find you are spending time every day over some repetitive task (eg. producing address labels for parcels), look to see if ABC can help.

If you cannot easily see how to get ABC to save you time on some task, contact your After-Sales Support company, or ABC Software, explaining what you are wanting to do. Usually we can help.

The TOOLS MENU (top right of the screen) contains functions like Send an email to ABC Software, Auto-Update ABC, View the ABC website or User Forum, display your ABC Version number, and enter your Registration Key.

Get started with Bookkeeping

ABC is designed to save you time and effort in looking after the mass of paperwork that is the bookkeeping in every small business.

At its simplest you can just enter details of everything you buy or sell, money received or paid. At the end of each month ABC can automatically produce neatly typed double-entry account books exactly like a perfect hand-written system (but without the effort).

Take these books to your accountant at the end of year, and they will sort out depreciation, prepayments and accruals, assets, etc.

Notes for Accountants: The emphasis in ABC is low level bookkeeping, and on screen we have hidden the complexities of accountancy. However, ABC is a full double-entry accounting package and could produce final accounts. ([page 76](#)).

Don't trust computers!

Beginners (and some experts!) often think that anything printed out by a computer must be correct. This is not true! The computer is only a large calculator and if somebody types the wrong number, the answer will be wrong. If your neighbour operates an arc-welding unit, a surge through the power supply can make your computer turn out nonsense.

The thing to bear in mind with any computerised accounts system is that computers and computer operators CAN make mistakes. So you must check everything.

At least glance through at each stage to see if totals look reasonable. If you are not comfortable with a paperless system, ABC let's you print anything or everything out on paper. You can then have your account books not only in the computer, but on paper in black and white.

Don't keep separate handwritten books!

Everyone will advise you to run a new computer accounts system in parallel with your normal bookkeeping for a few weeks or months, to make sure it is working correctly. This advice is correct in general, BUT with ABC you can do this without having to do all that handwritten paperwork yourself. Here's the secret:

Enter into ABC details of everything you buy and sell. Print the reports on paper. Now treat those pieces of paper as your handwritten account books, and check them carefully.

In the absolute worst case (eg. your computer goes wrong) you are still

better off! A Sales Daybook is a list of invoices with a total at the end no matter whether it was produced laboriously by hand, or printed out in seconds by a computer.

Another factor is that if you do keep a separate set of books, it is often difficult to get exact agreement with the computer. You can end up wasting hours to find why the computer total is a penny different (often due to a mistake in your manual adding up). It's much better to spend a fraction of that time on double checking the paperwork produced by the computer. You'll achieve the same result.

If you are in doubt about this advice talk it over with your accountant. We are happy to speak to accountants about the best way to use ABC.

After the first few weeks

Once you have got used to working as described above, please continue to do this. Just because things appear to be OK for a few weeks, don't assume everything will work perfectly for ever.

Paperless Office

This dream is finally starting to come true. With ABC you can produce month end reports, but save them as PDFs on disk instead of printing on paper (you can always print them later if you need to). And ABC can send invoices and statements by email instead of by post.

A typical month's bookkeeping

During each month you would produce sales invoices on the computer using the Sales Ledger and enter details of unpaid bills into the Purchase Ledger. Collect together all petty cash receipts and other miscellaneous bits of paper (eg. till rolls) and enter these into the CashBook. You can do this each day, or every few days, whenever it is convenient.

When you receive a cheque (or cash) in payment of a sales invoice, enter this into the Sales Ledger (so you can mark the invoice paid) and not into the CashBook. When you pay a supplier's invoice, start by telling ABC you have paid that invoice (in the Purchase Ledger) and the computer will then show you how much to write on the cheque and can print a Remittance Advice to send with it.



It is best to make entries approximately at real dates (ie do not get too far behind in your entries). It is a good idea to run the ABC Month End function within a few days of the real end of Month even if it means a some late items get entered into next month instead.

After the end of the calendar month you can continue producing sales invoices (ie. with next accounting month's date) while still entering unpaid bills from suppliers. Most people run the ABC Month End routine about a week into the next month. Before doing this, have a final check that you have entered everything into the computer from this month. Go through your bank statement and enter any bank charges or standing orders.

Then select the MONTH END function. This can be customised to automatically print out a lists, in the form of double-entry account book pages, of everything you entered during the month. (though these days many people save paper by not printing anything out unless it is required) That is the minimum you need to do!

ABC has taken care of all the calculations, adding-up columns and separating out the VAT.

If you are keen, you can do much more; for example print out useful Trading Reports (Profit/Loss) or Balance Sheet at any time showing a summary of the business, and reports to analyse sales and expenses.

More than one way

There often are several ways in which you could enter something into ABC Accounts. For example, if you cash a cheque at the bank and put the money in your petty cash tin, this could be entered into ABC in three ways:

- 1. Cashbook PAYMENT (cheque paid from the bank)
- 2. Cashbook RECEIPT (cash received by petty cash tin)
- 3. Nominal Transfer (amount transferred from bank to petty cash)

Any of these will work OK. (Method 1. is preferred because it allows you to enter the cheque number into the correct place).

We give suggestions in the following pages on the best way to enter things. The general rule is to choose whichever method seems most natural, most like real life. And don't worry about it, this is just fine tuning. Even if you change your mind later you can enter an adjustment or transfer to move things around. ABC keeps you safe by preventing you doing anything invalid, and always keeping the books balanced.

2

Getting started

Setting up the Accounts
General Notes about VAT

Introduction

It is important that you set up ABC correctly to suit your business before you start using it to do the bookkeeping. For example, check that the VAT rates are set correctly, invoice numbers are set to the required start number, your Company Name and Address details are entered, and that any dummy information has been cleared from the files. Use the checklist below:



If you create an extra company at any time, you must follow this procedure to set up that Company before starting to use it.

If you are upgrading from an earlier version of ABC, the IMPORT function will take care of most of this automatically ([page 24](#))

1. Set up Analysis Headings (Nominal Ledger Accounts) [page 15](#)
2. Clear out any dummy information from the files and set your Accounting Year and the current Accounting Month. Set Folio Numbers. Also specify if you are VAT Registered. [page 18](#)
3. Enter your Customer and Supplier names and addresses. If you have been trading for a while there will probably be invoices already outstanding with these companies so you might choose to enter the amounts as Opening Balances. [page 19](#).

My Company Name

List of Headings

30 Dec 2013 11:50



Page 1


Code	Description	Db/Cr	O/Bal	MTD	YTD	Curr.Balance
1000	SALES					
1111	Sales Dept 1	Cr	0	195.34	2757.32	2757.32
1121	Sales Dept 2	Cr	0	352.00	3834.72	3834.72
1131	Dept 3	Cr	0	0	577.90	577.90
1171	Department 3	Cr	0	140.00	1252.44	1252.44
1951	P&p Charge	Cr	0	0	0	0
1971	Sales Discount	Cr	0	10.00	10.00	10.00
1999	Total Sales					
2000	OTHER INCOME					
2999	TOT OTHR INCOME					
3000	PURCHASES					
3111	Dept 1	Db	0	0	0	0
3121	Dept 2	Db	0	0	0	0
3131	Dept 3	Db	0	161.44	161.44	161.44
3231	Direct Postage	Db	0	0	0	0
3971	Discount	Db	0	0	0	0
3981	Stock Adj Cost	Db	0	0	0	0
3999	Total Purchases					
4000	EXPENSES & O/Hs					
4100	Wages					
4111	Dept 1	Db	0	0	0	0
4121	Dept 2	Db	0	0	0	0
4199	Tot Wages					
4200	Financial					
4211	Bank Charges	Db	0	0	0	0
4212	WAGE S DE PT 3	Db	0	0	0	0
4222	Bank Interest	Db	0	0	0	0
4231	Accountant Fee	Db	0	0	388.18	388.18
4251	Insurance	Db	0	0	0	0
4261	Bad Debts	Db	0	0	0	0

Set up some Analysis Headings

The Analysis Headings (our word for Nominal Ledger accounts) are the centre of the Accounts system, and hold details of vague things like assets, profit, VAT, bank accounts. Americans call it the General Ledger, whereas in the UK we prefer Nominal Ledger.

Think of the Nominal Ledger as a book with nine chapters. Chapter one is for Sales, Chapter four is for expenses, Chapter eight is for Current Assets, etc. Each Chapter is split into sections for example Chapter four (expenses) might contain sections for Gas, Electricity, Postage, Insurance, Bank charges.

With a handwritten ledger the usual way to show these sections is with columns; one column for Gas, one for Electricity, etc. The title or name of each column being written as a heading for the column. Splitting your expenses up in this way allows you to analyse your business -- see at a glance what you are spending on each item. In ABC we call these sections (ie. columns) Analysis Headings. (Accountants think of them as Nominal accounts).



The advantage of the computer is that you can create as many Headings as you need and analyse your business just how you choose

Quick Tip: ABC does include some example sets of Analysis Headings for some typical small businesses. You could just choose one of these and almost ignore the following couple of pages if you are in a hurry.

Each Heading is given a unique number; those in Chapter one have numbers between 1000 and 1999, those in Chapter four between 4000 and 4999. Some sample Headings (Nominal accounts) could be:

4223--Gas expenses, 4325--Telephone charges.

Before you start using ABC, you need to set-up the Headings to suit your own type of business. You don't have to get this perfect first time, because you can alter things later; but it is sensible to get the Headings approximately correct before you start making entries.

We suggest you print the existing list of Headings ([page 70](#)), and work just on paper until you are satisfied you have a suitable list of Headings (an accountant might call this a Chart of Accounts).[page 14](#).

Nominal Ledger > Print List of Headings

It is a good idea to talk to your accountant about this, and you do not need to use the computer at all; just pen and paper. A copy of last years accounts

would provide a good starting point.

It is easy to add more Headings later, if you find you need greater analysis of certain parts of your business. But it is difficult to delete Headings after you have used them (it upsets the audit trail). As a general rule, therefore, you should start off with very few Headings, and only add more when you really need them. Do not create a separate Heading for each Stock Item -- that analysis is better done using the Stock System.

Analysis Heading Groups

The Analysis Headings are divided into 9 Groups (chapters)

Group	Category of Headings (N/L Accts)	Db or Cr
1	SALES or INCOME.	Credit
2	OTHER INCOME	Credit
3	PURCHASES and COST of SALES	Debit
4	EXPENSES & OVERHEADS	Debit
5	CAPITAL EMPLOYED	Credit
6	LONG TERM LIABILITIES	Credit
7	FIXED ASSETS	Debit
8	CURRENT ASSETS	Debit
9	CURRENT LIABILITIES	Credit

ABC takes the totals of these groups and uses them as follows: (You can rename the groups, though that won't change their function).

Gross Profit	=	Group 1 - Group 3
Net Profit	=	(Groups 1 + 2) - (Groups 3 + 4)
Turnover	=	Group 1
Liabilities	=	Groups (5 + 9 + 6)
Assets	=	Groups (7 + 8)
Working Capital	=	Groups (8 - 9)



Note for Accountants:
An *Analysis Heading* is what ABC calls a Nominal Ledger Account.

Analysis Heading Numbers

Each Heading is numbered (think of it as the Account Number) and this number determines the properties of this Heading.

Analysis Numbers can range from 1000 to 9999

Headings in Group 1 have numbers beginning with 1.

Headings in Group 2 have numbers beginning with 2, etc.



To make your Trading and Balance Sheet printouts look prettier (and to create sub-divisions within Groups) you can use some Headings as Group Titles, Sub-titles, and Totals. These sub-title and total Headings cannot be used for entering money; they are purely cosmetic.

Numbers ending in 000 are main group titles.

Numbers ending in 00 are sub-titles.

Numbers ending in 0 are titles of sub-divisions.

Numbers ending in 999 are main group totals.

Numbers ending in 99 are sub-totals.

Numbers ending in 9 are totals for sub-divisions.

For example, Number 1000 is Main Title for Group 1

All other Numbers are normal Headings, and can have amounts of money entered against them.

For example, 8411 is Bank Account 1



The Subtitles and Subtotals allow you to divide your business up into departments if required. You could ignore these for now and add some later if you need to.

Examine a List of Headings ([page 14](#)) you will see how the titles and totals Headings appear, determined by their number.

If you add a new Heading to your list, give it an appropriate number. It is a good idea to leave a few gaps between numbers in case you decide later to add some further Headings in this area.

Clear the Accounts Files

The original ABC installation contains some dummy information to let you experiment with the Accounts system. When you are ready to start using ABC for your business, you must clear out all the Accounts Files.

Accounts Utilities > Rarely used functions > Clear the Accounts

There are 3 stages to this process and you can complete them in any order. Before you can finalise (by clicking START) you will need to type the word YES into the box -- this is to convince ABC you are sure you wish to proceed.

- ◆ Enter your company name and address details.
- ◆ Are you registered for VAT? Tick the box if you are, and also enter your VAT Registration number. (If you have applied for VAT registration, tick the box and put your number as “Applied For”)
- ◆ Set the starting Sales Invoice number, Purchase Folio number, etc. If you already have a bookkeeping system you might choose to carry on with the same number sequence, or you could start from 1 (or from 1000). [page 21](#)
- ◆ Enter the Year & Month of the start and end of your Accounting Year.
- ◆ Enter the Year & Month in which you wish to begin using ABC. This must be within your Accounting Year.
- ◆ Choose ALL DATA (clear out Customer names/addresses also) or ZERO THE FIGURES and retain some data -- you can specify.
- ◆ Select a set of Analysis Headings (Nominal Ledger Accounts) for your business. You can retain the existing set, or choose one of the presets included with ABC. You will be able to modify these later, so do not worry too much about it at this stage.



The Headings (Nominal) descriptions are not cleared but the Heading balances are all set to zero. If you want to delete any Headings, this is a good time to do it (while they have no transactions).

When all the above are set as you require, click START to actually clear the files.

Set-up Customers and Suppliers

CAUTION regarding VAT: If you need to enter details from your old handwritten bookkeeping system into ABC, think carefully about the VAT involved in the old invoices. Either handle it outside of ABC (manually) or enter it into ABC and let ABC take care of it completely. Do not do both! (There is only one thing worse than paying VAT; and that is paying it twice!!) See item 3. below. Discuss this with your accountant if in doubt

It is not essential that you enter all your Customer and Supplier names and addresses into the computer before you start using ABC because you can add new records at the time you enter invoices. You might choose to ignore this section completely. However, if you want to enter your Customers and Suppliers first, here is what to do:

1. Prepare a list of existing customers and suppliers. These do not need to be in alphabetic order.
2. Add the new Customer and Supplier Records ([page 26](#))



You can add these records in any order. You can enter them all or just do some now and the rest later; or add new customers at the time you invoice them.

It is possible to import data from .csv files. Contact us.

3. Choose from 4A, 4B, or 4C for how to enter old invoices. Method 4C is best (but involves most work). Most people probably use method 4B. If you are just starting a new business, then 4A is your choice.
- 4A. Do Nothing! You are starting with blank files. (If you do have any invoices from before you started using ABC, you must continue to handle them by your old manual bookkeeping system -- they are nothing to do with ABC. Remind your accountant to combine those old invoices with the ABC books to produce your final Accounts at year end).
- 4B. Enter an Opening Balance. Instead of entering all the details of what a customer owes you, just enter the total amount (and this figure is put as the Opening Balance on their Account). One complication is that you must separately take care of any VAT relating to those old invoices. (If you are using the Cash VAT Accounting method, sorting out the VAT may be complicated -- you might find it simpler to use 4C instead!!).

By just entering Opening Balances to Customer/Supplier records you are ignoring the VAT (this was accounted for at the time the original invoices were raised). You have two choices for handling the old VAT:

1. Do it outside of ABC (eg by hand).
2. Work out the amount of VAT and enter this as an Opening Balance to Heading 9211 -- VAT Control Account in the Nominal Ledger ([page 54](#))

Decide on a starting date, usually the 1st of that Month you entered as the starting month. (page) Calculate the balance for each customer and supplier AT THAT DATE. This will be their Opening Balance; enter it into ABC.

- 4C. Enter all the old invoices into ABC. ie. go back in time a few months, and enter all the individual original invoices; ie. duplicate the manual system. You do not have to print these invoices when entering them but it might be useful. ([page 63](#)) If you do not have too many old invoices, this method is the best one to use.

ABC is very flexible. You may choose method 4C for some of your customers, but 4B for others. Just remember that once you have entered something onto the computer, you must account for it. If you enter invoices with VAT, you must at some stage also enter details of payment of that VAT to the government.

5. You can print on paper to make it easier to check what you have entered. Look at the reports to see the figures you have entered. This is a very good way of learning how a bookkeeping system works. For example, examine the List of Customers report and Aged Debtor report ([page 66](#))



To correct mistakes in the Customer name/address details edit the Customer Record. ([page 26](#)) You cannot directly edit the account balance so if you need to adjust the figure enter an Opening Balance (as a positive or negative amount).

Company name and address

Your Company name and address details will be printed on reports (including invoices and statements) so take care to get everything correct (though you can edit them at any time).

Accounts Utilities > Edit Company Parameters



FOLIO NUMBERS

ABC automatically generates a unique Folio Number for each transaction you enter. These folio numbers then appear on all reports, audit trails, etc, making it easier to track the transactions. There are 5 sets of folio numbers:

SL - Sales Ledger Invoices

PF - ProForma Invoices

PL - Purchase Ledger Invoices (Unpaid Bills)

CB - CashBook entries

JN - Nominal Ledger Journal entries.

Normally you should not alter these during the year.

Check the VAT rates

Accounts Utilities > Rarely used functions > Edit VAT Rates

Whenever you enter a transaction into ABC you must specify which VAT rate applies by selecting one of the following VAT Codes. Only edit the percentage rates if they do not match current VAT rates.

You can also edit the description (Notes) and Hints (tooltips) if required.

Code	Rate	Notes	Hint
0	Zero rated goods	books, food; also exports	(tooltip)
1	Standard rate (eg. 20%)	most sales and purchases	
2	Alternative rate 2		
3	Alternative rate 3		
4	EC zero rate		
5	EC Standard rate	most EC sales and purchases	
6	EC Alternative rate		
E	Exempt from VAT		
N	Not applicable	internal transfers, wages	

VAT General notes

There will be occasions when ABC queries the VAT Amount you entered because it does not exactly agree with the expected amount.

- a) If you have made a mistake, then change your entry.
- b) If you had a valid reason for entering this VAT Amount (see next paragraph), then you can select Continue.

Mistakes involving VAT

If you spot an error on the piece of paper you are entering into ABC:

- (1) If you recently created this piece of paper (for example, a Cash Sale Receipt), and no copies have been given to anyone else; then you can tear up the paper and start again with a corrected version.
- (2) If you have already sent someone else a copy of this piece of paper, or if you are entering an invoice or receipt from a supplier; then you must enter the incorrect figures into the computer exactly as they appear on the paper.

Sales Invoices - cosmetic adjustment

VAT can be worked out line-by-line or calculated on the invoice total. ABC uses the line-by-line method (as this allows you to mix VAT rates on the same invoice), but humans usually use the invoice total method. Both methods are acceptable, but could give slightly different results (eg. a few pence difference). This may worry your customers if they check the invoice using the other method.

ABC tries to be smart! If all lines on the invoice have the same VAT rate, then the program will try to adjust the VAT total so that the line-by-line method gives the same result as the invoice total method. The small adjustment is made to the first line of the invoice. It should be stressed that this is being done purely for cosmetic reasons; the VAT Inspector will accept either method (see HMRC VAT Regulations if you don't believe us).

Cash VAT Accounting

ABC automatically allows for Cash-VAT-Accounting (the system where you do not have to pay VAT to the government until your customer pays you). There is nothing you need to do differently in ABC whether you use Cash-VAT or normal Accounting.

For Cash VAT Accounting ABC treats part-paid Sales Invoices as fully paid, and part-paid Purchase Invoices as unpaid. If an invoice is for a large amount and only a small part is not paid, it might be better to split the invoice into two separate invoices so the large part can be marked paid.

Print the VAT Return

You can choose a standard VAT Return, or the Cash-VAT Accounting Return (which includes some additional pages showing how ABC arrived at the results). In either case, you should check the figures carefully before proceeding. [page 70](#)

From April 2011 all companies are required to submit their VAT Return Online. ABC6 is approved by HMRC to do this. You must view the VAT Return before you can press the button to send it to the government website. When you send your VAT return Online ABC will display the message the government sends back to you -- print this out and keep it with your records.

A full VAT Audit Report can be printed, listing all the transactions containing VAT within the date range you specify. VAT Returns can also be reprinted for past periods.

Notes for the VAT Inspector

ABC can produce an audit trail of everything that has been entered during any specified period; and this can be printed on paper for easier inspection or record keeping.

Every report has a separate column for VAT, with a summary at the end.

The ABC VAT Return can list all VAT transactions during the period, followed by details of any calculations or adjustments to those figures. Finally, the last page shows the entries required on the VAT submission.

Please contact ABC Software if you have any queries or wish to discuss ABC ([page iv](#))

Import from ABC5

ABC includes a function to import all the Accounts data from your old version of ABC5. This process does not affect the ABC5 files at all, and you could continue to use the old ABC5 for a while. This function can be used at any time, and you can use it more than once if you wish.



If you have more than one Company in ABC5 then first you must create a corresponding new Company in ABC6 and then ensure you are in that Company before using Import. You need to do the Import separately for each Company.

Accounts Utilities > Rarely Used > IMPORT FROM ABC5

Select which of your old ABC5 Companies to import from (if you have more than one). The Import process may take a few minutes if you have a lot of history. While importing the data, ABC6 will check the records and will skip any damaged or deleted records. Check the text in the progress box on screen for a report on what has been imported.

Import from other software

Over the years we have a lot of experience importing accounts data into ABC from programs like SAGE, QuickBooks, and Excel spreadsheets. This is usually quite easy and is not a big job. However, it is not feasible to include import routines for all the many and varied versions of different programs available, and therefore we offer a service to do this sort of thing for you. At the same time we can manipulate and carefully check the consistency of the data to ensure you have a perfect set of accounts to get started with ABC.

Contact us to discuss anything like this. ([page iv](#))

3

Record cards

Add new Account Record Cards
Edit existing Accounts
Customers Stock Items Headings

The screenshot shows a software interface for managing record cards. At the top, there are four tabs: Address, Notes, Options, and Charts. The 'Address' tab is selected, showing details for 'White Paint Ltd'. The company key is 'WHITEP'. The address is 'Snow White House, Brush Street, Smoothcote, Shropshire, SB6 3NN, EC UK'. Contact information includes 'Wilbur Thread' as the contact, phone '0987-65432', and mobile '0789-9876 7890'. Financial summary shows a total balance of 0, year to date of 152.75, credit limit of 0, and last year of 270.25. There is a 'Show History' checkbox checked at the bottom right of the form.

Date	Type	Folio	Amount	RunningTot	Outst.	Notes	Gen Ref	Paid Ref	VAT
08 Nov 13	Money Rec'd	CB009711	-105.75	-105.75	-105...		JB		0
19 Oct 13	Invoice	SL012065	105.75	0	105.75	O/No 7823HH			15.75
30 Sep 13	Money Rec'd	CB009700	-200.00	-200.00	0				0
15 Jul 13	Opening Bal	JN004002	200.00	0	0	Opening Balance			0
27 Jul 13	Money Rec'd	SL012050	-47.00	-47.00	0	0 cheque	000580		0
27 Jul 13	Invoice	SL012050	47.00	0	0	0 Garden			7.00
25 Jan 13	Money Rec'd	CB009403	-117.50	-117.50	0	0 Cheque	000546		0
11 Jan 13	Invoice	SL011927	117.50	0	0	0 garden			17.50


ABC keeps a Record Card for each Customer Account, to store their name, address, balance, history, notes, etc. The Record is split into several tab pages (see example above). Similarly there is a Record Card for every Supplier, Stock Item, and Nominal Account (Analysis Heading).

This chapter explains how you can view or edit existing records, add new records, or print a record. Full details are given of the information that is stored in each Record Card.

Customer and Supplier Records

Supplier and Customer Record Cards are similar, so this section applies to both. Select Sales Ledger for Customer Records, or Purchase Ledger for Suppliers: (There is an extra tab on Supplier Records for Purchase Orders; this is greyed out -- non working -- if you do not have this extra module).

Sales Ledger > Customers and Sales Entries



We talk about the Customer Record Card but an accountant will probably call it the Customer Account. (and a programmer might think of it as one Row in the Customer Table.)

The list panel to the left of the Card allows you to find a particular customer and then view or edit their Record Card. ([page 109](#))

Create New Customer Record

Select ADD from the ribbonbar. A blank Record Card is displayed. Fill in the name and address details as explained below.

Edit or View Customer Record

Find the Customer Record that you require. Select EDIT from the ribbonbar if you want to change anything (experts can bypass this button) ([page 110](#)).

Some Fields are updated automatically by ABC and you cannot change them (eg. the Account Balance).

Details of each Field

The Customer (or Supplier) Record Card has Fields for the name, address, credit limit, balance and other details. Each Record Card has several tab pages containing groups of Fields (described below). Many of the Fields can be left blank -- you can edit them later if required.

Field Name	Description and Notes
Account Number	This is generated by ABC to ensure each customer has a unique account number. You cannot change this.
Key	This is just a shortcut or nickname for the Customer that you can use to quickly locate their Record. Enter any code or abbreviation; or leave it blank and ABC will fill in the first few letters of the name as a suggestion.

Field Name	Description and Notes
Company Name Address and Postcode	Enter the business name and address of the Customer (Supplier). ABC will use this when printing statements, invoices or letters, so check it carefully. The EC Field is a 2 character European Country code.
Telephone and Contact Name	ABC will use this when printing a list of Customers (or Suppliers) and Aged Debtor Lists.
Mobile phone and fax numbers. Email address	Can all be left blank if not required.
Current Balance	The total amount owing on this account at this moment. You cannot directly edit this Field. When you enter a bookkeeping transaction (for example an Invoice or Money Received) ABC will update the Balance.
Year to Date	The total amount of trading for the current bookkeeping year, up to today's date. ABC updates this automatically.
Credit Limit	ABC will warn you during invoicing if the account balance is approaching this Credit Limit (you might then choose to ignore the warning..... that's up to you!). If you leave it blank (or set at 0) then ABC will not check the Customers credit limit.
Previous Year total	You can leave this blank. Or you can fill in an approximate total of how much business you did with this Customer (Supplier) last year (excluding VAT). ABC will automatically update this Field during the Year End.
Last Invoice Month	ABC automatically updates this field with the bookkeeping month number (eg 201403 for March 2014) of the last time you sent/received an invoice.
Last Transaction	Leave this blank. ABC will keep this field updated with the date of the most recent transaction for this Customer (or Supplier)
Unallocated and Overdue (indicators)	If this Customer (Supplier) has a money or credit note item over 30 days old and not paid, the indicator will glow red. Even if the Balance is zero because you have entered their payment, the indicator will glow to show that items are not yet allocated (marked paid).

Field Name	Description and Notes
History or Outstanding	The grid (table) will display the transactions for this Customer (Supplier). You can choose OUTSTANDING to see only the unpaid items; or HISTORY to see everything. Right-Click an invoice to Zoom or reprint.
Note 1	A single line of text for your own use.
Note 2	A single line of text for your own use.
Note 3	A single line of text for your own use.
Memo	This can store a large amount of text (many hundreds of lines).
Customer Ref	If the Customer refers to you by a code or account number; you can enter it in this Field. This can be printed on sales invoices.
VAT Registration	The Customers VAT Registration number; as required for reclaiming EC VAT. Can be left blank.
Delivery Address	The Customer might have different addresses for deliveries and for invoicing. ABC allows you to store several different delivery addresses for each Customer. Leave this Field blank -- ABC will automatically fill in the code of the last Delivery Address used for this Customer. (You can edit the Delivery Addresses while producing a Sales Invoice).
Agent	For your use (or used by Sales Order Processing)
Type of accounting	You can specify Open Item or Balance Forward accounting for the Customer. The default is OPEN ITEM (which is what most people prefer).
Settlement Discount	Tick this box if you wish the Customer to be offered a Settlement Discount on sales invoices. Also set the percentage and number of days.
Cash with Order basis	Tick this box if you do not want to allow this Customer any credit (ie. they must pay cash for any goods or services)
Use VAT Inclusive prices	If you tick this box ABC will treat all prices entered when invoicing this Customer as VAT Inclusive. This is useful if your goods are marked with retail prices.
Zero rate VAT	If this Customer is a registered Charity for example.
Inactive	If this box is ticked, the Customer will remain in the files (so you can reprint old reports) but can be hidden

Field Name	Description and Notes
Price Group	The Stock System can store 3 different prices for each item. When invoicing this customer Price1 will normally be used. If you tick the Price Group 2 box, or Group 3 box, then Price 2 or 3 will be used when invoicing this customer.
Trade discount	If this Customer nearly always has a trade discount then you can enter the discount percentage here, eg 10%. ABC will use this as the default when you invoice this Customer.
Terms	For your use. eg. Strictly Nett. Payment within 30 days. These terms can be printed on Sales Invoices.

View or Print

While looking at a Customer (or Supplier) Record; you can view or print a Statement (list of all unpaid items) or History (list of every transaction -- you can specify a date range). Other options on the View/Print Menu are address label, mail-merge letter, envelope.

If you want to print details of ALL (or several) Customers; then select a Report from the Sales/Purchase Ledger Menu -- eg. to print Statements for all Customers with outstanding items ([page 68](#))

Reprint (or view) old Invoice

Right-click on an invoice in the History Grid, and select Zoom to view or reprint.

Mark as Inactive

Select the Customer (or Supplier) Record Card, and click MARK INACTIVE on the ribbonbar. This will tick the box "Inactive Record" on their Record. The Record will not be removed from the file (to keep the audit trail intact), but you can tell ABC to hide *Inactive* records.



To restore a Record to Active, edit the Record Card and untick the MARKED AS INACTIVE box on the Options tab page.

Click the button on ribbonBar to show/hide Inactive.

Purchase Orders

Purchase Order Processing is an optional extra and has its own manual.

Analysis Heading Records (Nominal Ledger Accounts)

The Nominal Ledger is for details of vague things like assets, profit, VAT, bank accounts. Also known as the General Ledger. ([page 15](#))

ABC keeps a separate Record Card for each Nominal Account (Analysis Heading), as shown below. The bottom half of the window shows transactions relating to that Analysis Heading. Click an option button to select This Month, This Year, or All transactions. Click on the title of a column in order to instantly sort the grid into that order (click again for reverse order).

The screenshot shows a software window titled "Record Details". At the top, there are input fields for "Code" (1111), "Short Description" (Sales Dept 1), "Full Description" (Sales in Department 1), "Month to Date" (195.34), "Opening Balance" (0), "This Year" (2757.32), and "Current Balance" (2757.32). On the right, there are fields for "Budget" (15000.00), "Dr or Cr" (Cr), "Type" (Sales), and "Last Year" (16345.11). Below these fields, it says "Accounting Year: 201305 to 201404. Current Month is 201401".

Below the form is a table with columns: Date, Folio, Notes, Net Asset, Running Tot, VC, VAT, BALHDG, Type, Acct, and Company. The table contains 15 rows of transaction data.

Date	Folio	Notes	Net Asset	Running Tot	VC	VAT	BALHDG	Type	Acct	Company
22/01/2014	SL012057	Gift Set type 12	39.66	39.66	1	6.94	8111	S	23	Cyart ...
06/09/2013	SL012058	Table Lamp, 12 Inch	180.00	219.66	1	31.50	8111	S	16	Dark ...
22/09/2013	SL012060	Valve Type JW1203 Brass	47.72	267.38	1	9.54	8111	S	4	Greys...
13/09/2013	SL012062	Dining Chairs, Mahogany	80.00	347.38	1	14.00	8111	S	5	Yellow...
06/10/2013	SL012066	Wall Light Unit PX44	35.39	382.77	1	6.19	8111	S	13	Silver ...
06/10/2013	SL012066	Valve Type JW1203 Brass	81.24	464.01	1	14.22	8111	S	13	Silver ...
11/10/2013	SL012067	Consultancy work	250.00	714.01	1	43.75	8111	S	17	Musta...
17/10/2013	SL012068	Dining Chairs, Mahogany	600.00	1314.01	1	105.00	8111	S	1	Green...
11/10/2013	SL012069	Gift Set type 12	71.94	1385.95	1	12.59	8111	S	11	Gold ...
26/10/2013	CB009704	4 tins paint	21.28	1407.23	1	3.72	8471	R	0	
12/10/2013	CB009705	Repairs to chair	10.68	1417.91	1	1.87	8471	R	0	
00:00:00	SL012072	Gift Set type 12	23.98	1441.89	1	4.20	8111	S	11	Gold ...
17/11/2013	SL012074	Dining Chairs, Mahogany	120.00	1561.89	1	21.00	8111	S	14	Offen...

Create a new Nominal Account (Heading)

Select ADD from the ribbonbar. A blank Record is displayed. Fill in the details (see next section). The number (Code) you give this Heading is important as it specifies what type of Account it is. [page 16](#).

It is very easy to add new Headings at any time, but not so easy to delete them (without upsetting the Audit Trail). Our advice is to only add a new Heading if you really need it.

Edit a Heading Record Card

Find the Record Card you require ([page 109](#)) and select EDIT.

You may find it useful to print a List of Headings on paper ([page 70](#)).

For hints and tips on editing Fields, [page 110](#).

Details of each Field

Field Name	Description and Notes
Heading Number (or Code)	Also known as the Nominal Account Number, or Heading Code. Each Heading Record must have a unique number. The number determines the type of Account. page 16 .
Short Description	A brief title for this Heading. This will be used where there is not space for the full description (below). eg MTB Ladies
Full Description	The full title for this Heading (Nominal Account) eg. Sales of Mountain Bikes (Ladies Size)
Current Balance	The total amount that is in the Account at this moment. Only ABC can change this Field.
Month to Date	The total of all transaction entered into this Heading during the current bookkeeping month. Only ABC can change this Field.
Start of Year Opening Balance	The figure that was in the Heading at the start of this bookkeeping year. This is normally zero for all Trading accounts (eg Sales, Purchases, Expenses)
Budget	For your own use. For example; you can print a report comparing actual balances with budget figures. Can be left blank.
Debit or Credit	Depending on the type of Heading this is; ABC displays whether it is a Credit or Debit account. (only an accountant could be interested in this)
Type of Account	The Headings (Nominal Accounts) are divided into 9 categories or types. (page 16). ABC fills in this field automatically based on the Heading number (Code).
Last Year	For the Trading accounts (eg. Sales) ABC keeps a note here of the total entered into this Heading last year.
This Month or Year, or All Transactions	The grid (table) displays the transaction history for this Heading. You can switch between viewing just this month's transactions, or the Year, or All transactions. You can also choose whether to include or hide items with future dates.



Headings with Analysis CODES above 5000 are Balance Sheet Headings.

Headings with CODES below 5000 are Trading Headings

Delete a Heading Record

Select Delete from the ribbonbar. Some Heading Records cannot be deleted because:

a) some Headings are used by ABC for automatic postings. These include:

1971 Sales Discounts	8395 Contra Payments
3971 Purchase Discounts	8411 Bank account 1
3981 Stock adjustments	8471 Petty cash tin
5111 Trading Profit C/F	8481 Money on Premises
5281 Opening Balance	9111 Purchase Control
8111 Sales Control	9211 VAT Control
8121 Stock Value	9221 PAYE Control

b) Headings that have an amount in the Balance Field, or which have been used recently, cannot be deleted.

Also, the Group Title and Group Total for a Group, ie. Headings 1000, 1999, 2000, 2999, etc, cannot be deleted.



Although you cannot delete these Headings, you can edit the descriptions to better match your own business.

Recalculate All Headings

When you change any heading (eg. by entering a transaction) ABC will automatically also recalculate any sub-totals and totals that are affected. However, there are circumstances where this does not happen so you can at any time tell ABC to do this. While viewing any Heading record, click the ribbonbar button RECALC BALANCES. It is safe to do this at any time. ABC will also do this automatically during each Month End.

Stock Record Cards

Introduction

Some people use the word Inventory instead of Stock. Each stock item is given a Record Card in the Stock File to store details like description, quantity in stock, price, and even a picture if you wish.

Some businesses may not need a stock control system but you can also use the Stock Records for keeping “text-only” Records to store commonly used phrases or notes. These can then be used on Sales Invoices when required.

For a Stock System to be useful you must keep it up to date.

The ABC Stock System has some advanced features. For example you can specify the type of calculations ABC makes when you buy new stock at a different price, or set Cost Price and Markup percentage, and ABC will calculate the Selling Price (with and without VAT). And you can ask ABC to warn you when the stock level of an item is getting low.

Stock System > Stock Records

Edit Stock record



Find the stock item you require ([page 109](#)) and select EDIT from the ribbonbar. (Experts can turn off this step). Hints for editing Fields, [page 110](#).

The Stock Record Card has Fields for the description, cost price, selling price, etc. These are spread across several tab pages, and described in the following table. The Channels tab page allows you to have different selling prices for different Channels (eg. your website, eBay and Amazon).

When you SAVE the Stock Record, ABC can recalculate the Selling Prices or Markup if you wish. You can set your preference on the Details tab.

You can choose to display various transactions in the History Grid at the bottom of the description tab page. Tick the option boxes to show Sales, Purchases, Adjustments, and either full history or this month only.

Stock Item measure -- types of Stock Item

You may have different types of items in stock. For example, one “unit” may be a microwave oven, a box of 24 lightbulbs, a roll of 50m of ribbon, etc. On the Details tab page you can specify how each stock item should be described (change the Description, Qty, and Measure; then click UPDATE). You can also have “text-only” stock items.

If you do not fill in anything here, ABC assumes each item is 1 unit.

Hide or Show the Details tab (Prices)

If you untick the DETAILS box (on the Description tab page) you cannot access the Details tab which shows Cost price and profit margins. This is useful if you may have customers looking at the screen and you wish to keep those details confidential.

Add new Stock record

From the ribbonbar select ADD. A blank Record Card is displayed, and you can fill in details of a new stock item (see below). You can also create a new Record by Cloning an existing stock Record. > click CLONE RECORD.

Pictures of Stock Items:

To set or change a picture, select EDIT and then click the PICTURE button. Pictures can be .jpg, .gif, or .bmp and must be located in the data folder for the company (eg. \ABC6\A_DATA). The ideal size is 275x200 pixels, 96dpi.

Alternatively you can fill in the picture name on the Channels tab page, either manually or by importing the names.

Delete Stock record

From the ribbonbar click DELETE.

If you have used (eg. bought or sold) this item recently, then it may be better to wait for a while before deleting it (otherwise the Stock History will have a gap).

Details of Fields

Field	Description
Stock Code	Any code or number. It must be unique. You will use this to quickly call up the stock record; so we suggest you choose codes that are short, meaningful and easy to remember. Up to 16 characters.
Short Descr.	A description of the Stock Item. This can appear on printouts and Invoices.
Barcode	Optional barcode of the stock item.
Manuf. Code	Optional manufacturer's part number or code for this item.
Warn if low tickbox	When producing a Sales Invoice; ABC will warn you if the Stock Item you enter is out of stock; if this box is ticked.
Quantity on Order	You can enter the quantity of units that you have already ordered.
Re-order Quantity	When you need to re-order this item, how many units do you normally order? This will be shown on the RE-ORDER LIST
Minimum Quantity	The lowest quantity of units that you require normally to have in stock. The NEED RE-ORDER LIST will show you all Stock Items where the Quantity in Stock is below this Minimum..
Allocated	The quantity of units you have sold but do not have in stock ie. on order and reserved for someone.
Location	It may be useful to specify a shelf or warehouse location.
Weight (Kg)	The weight of the item in Kg
Size (cm)	The dimensions of the item in cm (eg. 5x12x10)
Spare 1	For your own use only. ABC does not use this field.
Note	A large memo field that can contain many lines of text.
Unit Cost	The unit cost excluding VAT. This is used for automatic calculations and valuation reports.
Case Cost	No longer used by ABC (replaced by "measure")
Case Qty	No longer used by ABC
Suppliers	You can note your main Supplier and a second source here. .
Account Nbr	The Account Number of Supplier 1. Required by Purch.Orders
P/L Heading Code	The default Purchase Heading Code to analyse this item under when entering purchases.
Purch. Dept.	The default Purchase Department for this item (not yet used).
Last-In Cost	For comparison when next you re-order.
Last in Qty	The number you last purchased. (ABC uses for calculations)
Method	For your own use

Description	Details	Channels	Adjustments
A45-RED Ribbon 20mm Red			
Unit Cost	88.5	Case Cost	88.5
Supplier 1	Southwold Fabrics	Case Qty	1
Supplier 2		Acct Nbr	0
Purch HOD	4511 Stationery	Last In Cost	88.5
Department		Last In Qty	5
		Last In Date	2 Aug 2015
Recalculate options <input checked="" type="radio"/> Ask about recalculate when saving <input type="radio"/> Never recalculate when saving <input type="radio"/> Always calculate PRICES from cost and markup % <input type="radio"/> Always calculate MARKUP from cost and selling price			
Selling Price (excluding VAT) Group 1: 141.6 Group 2: 137.2 Group 3: 125.7		Selling Price (including VAT) Group 1: 169.9 Group 2: 164.6 Group 3: 150.8	
VAT Code: 1 Standard Rate UK Sales HOD: 1131 Dept 3		Markup % Group 1: 60 Markup % Group 2: 55 Markup % Group 3: 42	
MTD1: 0 MTD2: 0 MTD3: 0		This Year: 0 This Month: 0 Average per month: 0	
How this stock item is measured a Roll of 200 metres Type of Stock Item: <input checked="" type="radio"/> Normal <input type="radio"/> Text Only			
Description: Roll of Qty: 200 Measure: metres <input type="button" value="Update"/>			

Field	Description
Case Disc'nt	No longer used by ABC
Selling Prices (Excluding VAT)	The Selling Price excluding VAT. If you leave this blank, ABC can calculate it from the Unit Cost price and the markup percentage. You can have three different prices for each stock item. (On the Customer Record you can specify which Price Group should be used for that Customer: 1, 2 or 3.) page 29
Selling Prices (Including VAT)	The Selling Price including VAT. If you leave this blank ABC can calculate it as above, adding on VAT at the current rate dependent on the VAT CODE Field.
% Markup	You can specify how much profit you wish to make on this stock item and ABC will use this figure to calculate the selling price (if you leave that Field blank). Alternatively, leave the Markup % blank and ABC can calculate the percentage from the Selling Price and Cost Price
Month to Date Sales (MTD)	The number of units that have been sold this month, at each Price Group. Normally you would leave this blank, and ABC will fill-in the figures as you produce invoices.

Field	Description
Re-Calculate Prices options	You can set options for getting ABC to recalculate prices when the Stock Record is Saved. These can be set differently for each stock item.
VAT Code	Specify the VAT Code that normally applies to this stock item. If you leave it blank, it defaults to Standard Rate.(Vat Code 1)
S/LHeading Code	The default Sales Heading this item will be analysed under when invoicing. (but you can change it when invoicing)
Sales Dept.	The default Sales Department Code. (not currently used)
MTD	ABC fills in the total quantity sold this Month To Date
Year to date	ABC fills in the total quantity sold this year (so far)
Average per month	ABC calculates the average quantity sold each month. This figure will get more accurate as months go by.
Type of Stock Item	A Stock Record can contain a NORMAL item (eg. some goods or service; with a price); or just some text -- TEXT ONLY. The difference is that ABC automatically adjusts the Qty In Stock Field as you buy and sell Normal Items but does not do this for Text Only Items.
Available to sell	For each Channel there is a tick box you can use to specify if this item is available to sell on that channel. Just untick the box to say the item is currently not available.
Channel Price	For each Channel you can specify a selling price. This allows you to have different prices on different Channels.
Category	Channels may have their own code to specify the Category and Sub-Category this item should be listed under.
Long Description	You can fill in full details of the item here. This description can include HTML code for formatting (set fonts, colours, etc)
Description 2	Another description field. This could be used for the brief product description to list the item under for the Channels.
Picture file	The name of the image for this item. Normally you simply browse to select the picture (on the description tab page) and ABC will fill in this field. However, you can edit this field directly (or import/export it for the channel if required).

Adjustments

The Adjustments tab page is a special section and when you enter this tab page you cannot leave until you click FINISHED or CANCEL. This section allows you to manually adjust the Stock Quantity (by simply setting the current quantity to the correct figure -- it does NOT create a transaction in the file: that's why it should only be used rarely, eg. after the annual stock take, to bring the stock levels to the actual values.

When you have finished you can print a report showing the changes you've made. Note that the Quantity Allocated or Quantity On Order fields are not affected by this process.

Global settings

Accounts Utilities > Edit Company Parameters > Stock

You can set various options here to choose how you want the stock system to work. Including:

- ◆ Calculate new cost price when you buy stock at different prices, using Last In price, or weighted average, or manually adjust.
- ◆ Number of decimal places for Cost prices and selling prices. With option to force all stock items to this,
- ◆ Make all stock quantities whole numbers.
- ◆ Allow stock transactions with future dates, or not.

After changing these settings you can get ABC to go through the stock file and force all records to conform.

Selling through other Channels

Not yet fully implemented, this is intended to allow you to use ABC as a master database of inventory, and then to export CSV files to update each Channel you are using(eg. eBay and Amazon). Ignore this tab page if you do not need this feature.

4

Transactions

Enter details of payments,
receipts, banking, stock,
or create invoices

There are many types of transaction in your business, for example purchasing goods from a supplier on account, buying a few stamps from petty cash, paying money into the bank, producing a sales invoice when you sell something, receiving money from a customer to pay their bill. To make it easier to enter the different types of transaction, ABC has appropriate entry routines to suit each type.

In general terms, if the amount of the transaction is more than a few pounds you should have a piece of paper to prove that the transaction is genuine. Figures on a computer screen are very neat, but the VAT Inspector and Accountant prefer traditional bits of paper like bank statements, cheque-stubs, invoices, petty cash receipts. If you do not have a bit of paper, then create one; write the details of the transaction onto a blank sheet, and put that into your ring-binder. Every transaction entered into ABC is given a folio number; ([page 21](#)) you should write this number onto the bit of paper.

We recommend you get into the habit of always doing this in some distinctive way; eg. get a rubber stamp, or use a purple pen, and always put the number in the bottom right hand corner of the document. This makes it easy to check, and if you find a document with this number on it you know it has already been entered into ABC.

When it comes to entering transactions into ABC, you can save time by collecting together similar items and entering them as a batch.

Now that online banking and shopping are so widespread, many people are not using paper at all. This is great, but take care that you do still have a proper record of sales and (in particular) purchases) in a format that will satisfy a suspicious VAT or Tax inspector. Discuss this with an accountant to be on the safe side.

First thing to do is decide which type of transaction you are entering. Here are the most common

Money Received - [page 41](#)

Invoice payments (for credit items, relating to a Sales Invoice)

Cash sales (miscellaneous non-credit items, eg till receipts) VAT Refund from Government

Money Paid - [page 51](#)

Pay a bill (purchase invoice)

Cash payments (petty cash) (for miscellaneous non-credit items)

Including: Wages to employees; NI, PAYE to government; Proprietor drawings; VAT Return to Government

Internal Adjustments - [page 53](#)

Bankings (take Money on Premises to the Bank); Write a cheque for petty cash tin; Opening Balances for Customers or Suppliers (Sales Ledger, Purchase Ledger);

Opening Balances (Nominal Ledger);

Transfers (Nominal Ledger Journal)

Stock (Inventory) - [page 57](#)

Stock Adjustments (enter results of Stock Take);

Goods In or Out.

Unpaid Bills (from Suppliers) (Purchase Invoices) - [page 58](#)

Sales Invoices - [page 60](#)

Create new invoice, or enter details of a handwritten invoice.

Also Credit Note, Proforma Invoice, or Delivery Note.

Corrections (adjustments) - [page 64](#)

Everybody makes mistakes from time to time. When you spot something wrong, simply enter a correction.

The following pages describe each type of transaction, and explain how to enter it into ABC.

Money Received

Decide if this is

- A. a payment for a Sales Invoice, or
- B. a small miscellaneous sale (eg. via the shop till)

A. Payment received for an invoice

**Sales Ledger > Customers and Sales Entries
> Find the Customer > Receive Money**



You can also find a customer record by entering:.

- a) Invoice Number, eg. enter SL1234
- b) Account Number, eg. enter #321

(ie. enter SL to find Invoice, # to go to Account Nbr)

The normal procedure is to first enter the amount of money received (and the date, payment method, etc). Then you can allocate this against one or more invoices to mark them as paid.

However, you could just enter the money and Save. Later you can mark items paid -- by allocating Credit Notes, Opening Balances, etc against invoices. You can also part-pay any invoice.

Sometimes you may allow the Customer a Discount. And occasionally the Customer will pay the wrong amount (eg. send a cheque for £34.12 instead of £34.21). ABC makes it easy to handle these entries.



You can even make ABC automatically allocate any receipts against invoices at month end and this brought forward option can be set for just some customers.

[Page 28](#)

Enter money details

The entry screen for you to enter details of the money transaction is shown on the next page.

ABC gives every transaction a computer Folio Number (eg. CB010027) as you enter it, and you may want to make a note of this (eg. write it onto the Bank Paying-In slip).

1. Money Details 2. Allocate

Money Received from: Green Brothers Ltd

Allow Discount

Amount Rec'd:

Method: Cheque

Date:

Paid into: MONEY ON PREMIS

Our Ref:

Note:

Folio Number
CB009721

Details of Fields for entering money received

Field	Description
Amount received	The amount of money received from the Customer.
Method of Payment	In what form was the money? page 108
Date of this transaction	Today's date is provided as the default; but you can change to a different date. ABC expects the date to be within the current bookkeeping month; but you can put a future month if necessary. You cannot use a previous month date. page 107
Paid Into	Specify the Analysis Heading where this money will be placed. Normally it should be the MONEY ON PREMISES (for cash/cheques); but could be a BANK (if Direct Debit etc). Page 107
Our Reference	A reference number or name (eg. the initials of the person making this entry; or the number from your bank paying-in book page)
Note	A description of this transaction. Can be left blank.

Discount

If you tick the ALLOW DISCOUNT box, additional Fields appear to allow you to enter and calculate a Discount for this payment.

The Customers account balance will be reduced by the Amount of money they have paid, **plus** the discount.

<input checked="" type="checkbox"/> Allow Discount				<input checked="" type="checkbox"/> Frozen
	Money		Discount (10.0%)	Total
Amount Rec'd:	339.14	+	37.68	= 376.82

Field	Description
Amount Received	The actual amount of money received from the Customer.
Discount percentage	ABC displays this automatically (in brackets).
Discount	You can enter an amount here; or enter a percentage (eg 3%)
Total	ABC calculates this figure automatically. This is the amount by which the Customer account balance will be reduced. You can play about with the above Fields to get the Total to what you require, and then tick the FREEZE box (to keep the total fixed). Now you can adjust the other Fields as required.

Allocate (mark invoices paid)

Select the Allocate tab page. This shows all unallocated items for the Customer (Invoices, Credit Notes, Discounts, Opening Balances, Brought Forward amounts, and Money Received).

These all need to be Allocated where possible -- for example, to mark an Invoice as *paid* by allocating Money or Credit Note against it. This can be done at any time. If you are using Cash VAT Accounting it is important to Allocate as many items as possible before printing a VAT Return.

In the left column you can enter:

- Y -- YES, PAID in full (Allocate this item)
- P -- to Part-allocate (then you enter the amount to part-pay)
- N -- NOT PAID (ie. cancel either of the above)



It is this process that alters the Amount Outstanding Field in the history/statements. When the outstanding amount is zero; an item is considered paid. You can also part-pay an item. If this Customer Record has the Option set as Brought Forward the computer will automatically allocate any money against the oldest invoices during the next Month End.

As you Allocate each item the Allocated TOTAL will change. We recommend you begin by allocating any money, credit notes and discounts these all will decrease the Allocated Total. Now start allocating invoices and any Balances Forward this will increase the Total. Stop when the Total gets back to zero (ie. an exact match between money and invoices).

If you select SAVE when the Allocated Total is not zero, ABC will query this, and offer you several alternatives to get rid of the discrepancy:

STORE AS BALANCE create a new Brought Forward item.

WRITE-OFF (as a Discount) useful for small amounts, eg. if a Customer's cheque is wrong by 2 pence.

ALLOCATE go back and try again.

EDIT MONEY go back to previous section and edit details of the payment received.

Refund to a Customer

Treat this the same as Money Received from a Customer (see above) but enter the amount as negative.

Contra Payments

If you owe a Supplier for an invoice, and they also owe you some money, you can cancel one against the other to save you both having to write out cheques (obviously they must also agree to this). This is known as paying by contra.

You should enter both the Sales and Purchase sides of this transaction at the same time, and the amount must be the same in both cases. (If the invoice on either side is of a greater value, then just mark that larger invoice as part-paid by the smaller amount).

Use the special Heading 8395 for all Contra Payments.

B. Cash Sales income

ABC gives you great flexibility when entering CashBook income. You can enter a batch of transactions (or just one) and then post these to the accounts immediately. Or you could store the batch, and continue entering at a later time (may be useful to let someone else check the entries before they are made final). You can print the batch of entries on paper, before or after finalising them.

Cashbook > Cash Income

You can switch between the previous batch and the current batch of entries. When you finalise the current batch it is posted to the accounts and becomes the previous batch. Only the current batch can be edited.

ABC generates a CashBook Folio Number (eg CB001234) for each item that you enter. We recommend you write the Folio Number onto each receipt or bit of paper as you enter them into ABC -- this makes it easy to cross-reference from the Audit Trail later. [page 21](#)

Date	HDG	Note	Ref	Amount	V	VAT	Method	BHDG
12 Dec 13	1121	Tabel repairs, minor	Dave	10.00	1	1.49	CQ	8411
19 Dec 13	1121	Shop takings	Week 3	317.55	1	47.29	CA	8471
28 Dec 13	1171	Sundry Cash sale	DD	34.89	0	0	CA	8471
26 Dec 13	1111	Shop	Week 4	215.91	1	32.16	CA	8471
				578.35		80.94		

The following Fields must be completed for each line.

Field	Description
Date	The date must be within this bookkeeping month; or a future month. page 105
Analysis Heading	What was this amount for? Enter an Analysis Heading CODE. page 105

Note	Imagine you are looking at a list in six months time; and trying to remember what this entry was for. The note will appear on the list; try to type something meaningful.
Reference	For your own use. For example; the Bank Paying-In Book page number. Or your initials.
Amount	Enter the total amount (including VAT).
VAT Code	The VAT Code for this transaction. page 108
VAT Amount	Enter the Amount of VAT. VAT Calculation: With the cursor in the VAT Amount field; you can press F8 and the computer will calculate the VAT amount for you (at whatever rate you specified with the VAT CODE).
Method	In what form was this money? Cash? Cheque? Direct Debit? page 108 .
Bank Heading	Where did you put the money? The Petty Cash Tin? Money on Premises, or directly to a Bank if it was a Bank Transfer?

As you complete each line, the amounts are added to the Batch Total at the bottom of the screen. You can Cursor up or down to move back and correct any entries you have just made.

You can save your work and resume tomorrow, or finalise the batch immediately.

The Summary Tab Page shows an analysis of the Headings you have used, and the VAT split. You can print a Batch Report at the end. Some people find it useful to print this list of what they have just entered, and store it in a ring-binder with any associated pieces of paper (eg. till rolls).

VAT refund from the Government

Enter this as a Cash receipt, with VAT Code N (Not Applicable). The Analysis Heading is 9211, and the Cash/Bank Heading is wherever you put the money, eg 8481-Money On Premises or 8411-Bank.

Money Paid

Decide if this is a

- A. Payment for an Unpaid Bill (Purchase Ledger Invoice), or
- B. Small sundry (ie. “cash”, not “credit”) purchase. (eg. wages, VAT or tax payment, petty cash for stamps or petrol)

A. Purchase Ledger Invoice payments

Normally it is convenient to first “tick” the unpaid bill(s) that you wish to pay, and ABC will show the total amount of money. ABC does allow part-payment of invoices, and paying of several invoices at one time. You can instead also just make an arbitrary payment to a Supplier.

A Remittance Advice Note and/or Cheque can be printed.

**Purchase Ledger > Supplier Records and purchases
> Find Supplier Record > Money Pay**



You can also find a supplier record by entering:

- a) Invoice Number, eg. enter PL1234
- b) Account Number. eg. enter #321

(ie. enter PL to find Invoice, # to go to Account Nbr)..

The Allocate Tab Page shows a list of all unallocated items for the Supplier (these can include Invoices, Credit Notes, Discounts, Opening Balances, Brought Forward amounts, and Money Paid).

These all need to be Allocated where possible -- for example, to mark an Invoice as *paid* by allocating a Money Paid against it. This can be done at any time. (If you are using Cash VAT Accounting, it is important to Allocate as many items as possible before printing a VAT Return.

In the left column enter:

- Y -- YES, PAID in full (Allocate this item)
- P -- to Part-allocate (then you enter the amount to part-pay)
- N -- NOT PAID (ie. cancel either of the above)



It is this process that alters the Amount Outstanding Field in the history/statements. When the outstanding amount is zero; an item is considered paid. You can also part-pay an item. If this Supplier Record has the Option set as Brought Forward the computer will automatically allocate any money against the oldest invoices during the next Month End.

As you Allocate each item, the Allocated TOTAL will change. We recommend you begin by allocating any money, credit notes and discounts. These all will decrease the Allocated Total. Now start allocating invoices and any Balances Forward this will increase the Total. Stop when the Total gets back to zero (ie. an exact match between money and invoices).

If you select SAVE when the Allocated Total is not zero, ABC will query this, and offer you several alternatives to get rid of the discrepancy:

STORE B/F -- create a new Brought Forward item.

WRITE-OFF -- (as a Discount) useful for small amounts, eg. if you paid three pence too much by mistake, this allows you to get rid of it

ALLOCATE -- go back and try again.

EDIT -- go back and change the money amount.

Arbitrary payment

If you wish to make an arbitrary payment to a Supplier, just enter this on the Money Details tab page and then SAVE. You can Allocate it at another time.

Print Remittance Advice or Cheque

You can print either of these at this stage. You cannot come back later and print them.



If the printout does not match your stationery, it can be customised to suit.

Details of the payment

1. Money Details
2. Allocate
Options

Money Paid to: *Holly Accountants*

Allow Discount

Amount Paid:

Method: cheque

Date:

Paid from: Bank Current

Our Ref.

Note:

Folio Number

CB009725

Print cheQue

Print Rem.Advice

Save and exit

The following fields must be completed:

Field	Description
Amount Paid	The amount of money paid to the supplier.
Method of Payment	In what form was the money? page 106
Date of this transaction	We suggest the date is within the current bookkeeping month. page 105
Paid from Heading	Specify the Analysis Heading from where this money will be paid. It must be one of your Bank Headings. page 105
Our Reference	This might be your cheque number
Note	A brief comment about this transaction. Can be left blank.

Discount

If you tick the ALLOW DISCOUNT box, additional Fields appear to allow you to enter and calculate a Settlement Discount for this payment.

The Suppliers account balance will be reduced by the Amount of money you are paying, **plus** the discount.

Field	Description
Amount Paid	The actual amount of money that you pay to the Supplier.
Discount percentage	ABC displays this automatically.
Discount	You can enter an amount here; or enter a percentage (eg 3%)
Total	ABC calculates this figure automatically. This is the amount by which the Supplier account balance will be reduced. You can choose to fix this total (play about with the above two Fields to get the total to what you require and then tick the FREEZE box) and then adjust the Amount Paid and Discount.

Refund from a Supplier

If you need to enter a Refund from a Supplier, enter it as a payment but as a negative amount, eg. -18.73

You cancel (stop) a cheque to a Supplier

Enter it as an arbitrary payment as described above but enter the amount of the cheque as negative, eg. -35.12

Contra payments

If you owe money to a Supplier, and they also owe you some money, you can avoid both having to raise cheques by simply cancelling your invoice against theirs (obviously they must also agree to this). This is known as paying by contra.

You should enter both the Sales and Purchase sides of this transaction at the same time, and the amount must be the same in both cases. (If the invoice on either side is of a greater value, then just mark it part paid by the smaller amount).

Use the special Heading 8395 for all Contra Payments.

B. Cash Payments (ie. not “credit”)

These are small miscellaneous purchases (by cash, credit card, cheques, etc) for example buying petrol, stamps, stationery at the local shop, paying the window cleaner. You would also use this CashBook for entering details of paying your VAT Return, proprietor drawings, cashing a cheque to put money in the Petty Cash Tin, and paying Wages to employees (and Tax/NI to the Inland Revenue).

You can enter a batch of transactions (or just one) and then post these to the accounts immediately. Or you could store the batch, and continue entering at a later time (may be useful to let someone else check the entries before they are made final). You can print the batch of entries on paper, before or after finalising them; and you can recall the previous batch of entries to view or print.

Cashbook > Cash Payments

You can switch between the previous batch and the current batch of entries. When you finalise the current batch it is posted the accounts and becomes the previous batch. Only the current batch can be edited.

ABC generates a CashBook Folio Number (eg CB001234) for each item that you enter. We recommend you write the Folio Number onto each receipt or bit of paper as you enter them into ABC -- this makes it easy to cross-reference from the Audit Trail later.

The following Fields must be completed for each line.

Field	Description
Date	The date must be within this bookkeeping month or a future month. page 107
Analysis Heading	What was this amount for? Enter an Analysis Heading CODE. page 107
Note	Imagine you are looking at a list in six months time and trying to remember what this entry was for. The note will appear on the list; try to type something useful (example... Employee name, description of item, reference number, etc).
Reference	For your own use. Some useful reference. For example; the Cheque number. Or your initials.
Amount	Enter the total amount (including VAT).
VAT Code	The VAT Code for this transaction. page 108

VAT Amount	Enter the Amount of VAT. VAT Calculation: With the cursor in the VAT Amount field; you can press F8 and the computer will calculate the VAT amount for you as specified by the VAT CODE.
Bank Heading	Where did the money come from? Petty Cash Tin? Cheque from Bank? Credit card? page 107

As you complete each line, the amounts are added to the Batch Total at the bottom of the screen. You can edit any entries you have just made.

You can save your work and resume tomorrow, or finalise the batch immediately.

The Summary Tab Page shows an analysis of the Headings you have used, and the VAT split. You can print a Batch Report at the end. Many people find it useful to print this list of what they have just entered, and store it in a ring-binder with the bits of paper (receipts) to form your Petty Cash Book.

Wages payments to staff; VAT or tax to Inland Revenue

Payments that you make to staff (paying wages), and payments to the government (paying tax and NI, and VAT Returns) should be entered as CashBook > Cash Payments. These are all VAT Code "N".

Direct Debits/Bank Charges

Enter these and tick them off on your bank statement (to ensure you don't enter them twice). Use CashBook > Cash Payments for these items.

Accountants only seem to believe bank statements, so most prefer you to enter these items only after you see them in black and white on the statement. This may cause you to be a month behind in entering these items. Check with your accountant -- we think they will still prefer this.

Standing Orders

You can store a list of regular transactions. Typically each month you call up the list and tick those items you wish to process (post to the accounts). ABC will stop you accidentally posting the same item twice in a month.

CashBook > Standing Orders

Internal adjustments/movements

These transactions take place within your business, ie. they are internal. For example, getting money from your bank to put in your petty cash tin, or making a correction for analysing an expense against the wrong Heading. In all these cases the VAT Code is N (Not Applicable).

Transfers (Nominal Journal direct entries) should be the last resort -- use these only if you cannot find a better way of entering a transaction.

Bankings

Most of the money you receive (entered using Money Received in Sales Ledger) is normally posted to the MONEY ON PREMISES Heading. It remains there until you use BANKINGS to transfer it to the bank. You should use the figures from your bank paying-in book to enter BANKINGS; and put the bank paying-in book reference as the Note.

When you select BANKINGS, the screen will contain the following items on each line. Generally you only enter a single figure for each type of money (eg. total of cheques, total of cash).

The reason for this procedure is to make the computer Bank Report agree exactly with your real bank statement, for easy reconciliation.

Cashbook > Banking

Start by selecting which Bank Account you have taken money to. Then enter one or more banking transactions. For each line you need to fill in the following columns:

Field	Description
Date	Must be in current Bookkeeping Month. page 107
Note	Any note or comment
Amount	The total amount of this batch of items; ie. the amount shown on your bank paying-in slip.
BankBook	The reference number from the page of your bank paying-in book.
Method	Type of items in this batch. eg Cheques? page 108

ABC generates a Journal Folio Number (eg JN001234) for each line. You should write this on the Bank Paying-in book counterfoil, or on the bank statement -- it helps cross-reference from the Audit trail.

Bank Reconciliation

This allows you to compare your real bank statement with the ABC List of bank transaction. Ideally they would agree exactly, but sometimes you will find differences -- eg. a direct debit or standing order you have not entered into ABC, or a cheque that didn't get paid into the bank. These differences need to be "reconciled".

CashBook > Reconcile Bank

Typically you should tick off on the bank statement and computer screen each item that appears on both. And then investigate any item on either list that is not ticked.

Start by selecting a bank account. When you have finished, it may be useful to print a list of unreconciled items on paper.

Writing a cheque for the petty cash tin

If you get money for the Petty Cash Tin by cashing a cheque at the bank, enter it here:

Cashbook > Enter Payment

Opening Balance to Customer/Supplier

This function is normally used only when you set up a new Customer Record. Note that the Opening Balance is simply a total amount of money -- any VAT must be handled separately ([page 19](#)) For Suppliers, use the Purchase Ledger instead.

Sales ledger > Customers and sales entries > Select customer > Opening Balance

Opening Balances (Nominal Ledger)

You can edit the Nominal Ledger Opening Balances for the current accounting year.

Nominal Ledger > Direct Entries > Opening Balances

After editing the Opening Balances, ABC allows the option to write these figures into the Headings (N/L Accounts) Records.

The Opening Balance Edit screen shows for each account (Heading) whether it is a Credit or a Debit account, but you do not need to think about this when setting the opening balance figure; just set each account (Heading) to the opening balance figure it should be, for example set Bank Account 8411 to eg. £3456.12 (unless it is overdrawn in which case you would put a negative figure eg -£456.78)

You cannot exit from the Opening Balances Edit until the books are

balanced, ie. total Db = Total Cr.

When you run the Year End function ([page 75](#)) the Closing Balances for this year can be used as the Opening Balances for next year.

These opening balances are stored in a separate file and you can edit them without affecting your accounts. ABC will not let you exit until they are balanced (ie. Total Db = Total Cr). You can choose to write these figures to the accounts (to the Opening Balance fields of the N/L accounts. The N/L current Balances are made up of the Opening Balance (at start of year) plus transactions for this year to date.

Transfers (Nominal Journal)

Most Bookkeeping entries will be made through the Sales/Purchase Ledgers or CashBook. The Nominal Ledger Journal should only be used for those few adjustments or corrections that need to be made directly to the Headings (N/L Accounts). We suggest you do not use Transfers unless you cannot find any other way.

Examples of Transfers

Make adjustment required by Special VAT Scheme

Transfer money from current account to deposit account

Adjust Prepayments, Accruals, Depreciation

Correction of mistakes.

Nominal Ledger > Direct Entries > Journal (Transfers)

Each line is one complete balanced entry; the transfer of an amount from one Heading (N/L account) to another. You need to fill in the following columns.

Field	Description
Date	Must be in current Bookkeeping Month. page 107
1st Heading	The Heading you are adjusting. page 107
Adjustment	The amount of this adjustment. You can put a positive or a negative amount. A positive amount will increase the Heading's balance. Do not worry about "Debit" or "Credit" -- ABC takes care of all that.
Note	Any comment or description of this entry.
2nd Heading	The balancing Heading. You are Transferring an amount from one Heading to another -- this is the other. ABC takes care of <i>Debit</i> and <i>Credit</i> and ensures everything stays balanced. page 107

The Summary Tab Page shows the effect of this batch of entries.

VAT normally is not involved in Transfers, because all you are doing is making internal adjustments within your business.



The expressions Increase or Decrease the Analysis Heading are translated by the computer to automatically Debit a Debit Heading (for increase) or Credit a Credit Heading (increase). Entering a negative amount to Adjust a Heading will Credit a Debit Heading, or Debit a Credit Heading.

Wages Summary

The calculations for wages must be done as a completely separate task, usually using the Inland Revenue calculator or a Payroll System (eg. the ABC Payroll). The summary can then be entered to ABC Accounts here:

Nominal Ledger > Direct Entries > Wages Summary

This posts the total liability to the Balance Sheet (Heading 9221) after you enter details of the wages, tax and NI totals. The totals are what you owe (to the government and to employees).

When you come to actually pay money to these people, use the normal CashBook > Cash Payments for the individual payments (the Analysis Heading for those should be 9221). ([page 107](#))



A good solution is to get the ABC Payroll Module. Not only does it do the calculations and produce all the paperwork, but it can automatically make the postings to the ABC Accounts system, and send the RTI data to HMRC website.

Stock Value

ABC will display the computer's value of your stock and you can enter a New Value. Usually this should be based on a Stock Valuation report. This figure can affect your Profit & Loss and Balance Sheet (and your accountant may adjust the value for various reasons).

Nominal Ledger > Direct Entries > Stock Value

This entry will write the new Stock Value to Heading 8121 (Current Assets) and the stock movement to Heading 3981 (Cost of Sales).

Stock (Inventory) transactions

Enter Goods In

Stock items received from suppliers.

Select Stock Record > Stock In



When entering Unpaid Bills (Purchase Ledger) you can at the same time update stock quantities from there. ([page 57](#))

Enter Goods Out

Items you are taking out of stock for some reason (if you use Stock Codes on Sales Invoices, those items are automatically taken out of stock by the invoicing system).

Select Stock Record > Stock Out

Enter Stock Adjustments

After completing a Stock Take, you might find the actual number of some items in stock is different to the computer figure. Use this function to correct the computer by entering adjustments. ([page 38](#))

Select Stock Record > click on ADJUST tab Page

This function might also be used to enter Stock Opening Balances.



The Purchase Order system (optional extra module) can update the Stock automatically as Orders are received from suppliers.

Unpaid bills (purchase invoices)

Find the Supplier Record > Unpaid Bill

If you do not already have a Supplier Record for this Supplier, you can Add one at the same time ([page 26](#))

Enter the following details from the Supplier invoice:

Field	Description
Invoice Number.	The invoice number from the unpaid bill.
Date on the Unpaid Bill	The date as shown on the unpaid bill. If it is in a previous bookkeeping month, ABC will leave the date as a note, but store the transaction in the current month.
Our Description	A few words to describe this purchase.
Invoice Total	The total amount as shown on the unpaid bill. (including any VAT).
Amount of VAT	If this unpaid bill includes any VAT; you must enter the exact figure that is shown on the bill (even if the Supplier got their calculations wrong; you must still enter their figures).
Their Account number	If the unpaid bill shows an Account number that the Supplier uses for our company; then you can enter this here (it will then be shown on any Statement or Remittance advice).

Now analyse the invoice total against one or more Headings, on the Analysis Tab Page. The following columns must be completed:

Field	Description
Analysis Heading Code	Normally will be a Cost of Sales (3000) or Expense Heading (4000) page 107
Description	A few words to describe this line.
VAT Code	Amount excluding VAT The amount (excluding VAT) for this line Shortcut: If you leave the Amount blank ABC will fill in the remaining amount.

Often you may just analyse the item against one Heading, but up to 99 Headings could be used.

Sales Invoices

ABC includes a full invoicing module (linked to the Stock System).

Sales Ledger > Customer Records > find Customer > Invoice

Invoices can have your choice of logo (small picture) printed at the top, and if you want to print a Message (eg. Special Offers this week) at the bottom of the invoice, a choice of attention grabbing borders can be used.

All invoices begin as “ProForma Invoices” and can be stored or printed part-finished. The Options tab Page allows you to print as Delivery Note, Estimate, Quotation, etc. ProFormas do not affect the accounts -- they can be edited or deleted. You can have several ProFormas for one customer. ProFormas are given a Folio number starting with PF.

Select FINALISE to convert the ProForma into a real Invoice and write it to the accounts files. A finalised Invoice cannot be changed any more -- but you can reprint it at any time ([page 29](#)). Finalised Invoice Folio numbers begin with SL.

If you currently have some part-finished or proforma Invoices for this Customer you can select one of those, or create a new invoice

The Invoice Top contains these Fields

Field	Description
Account number Invoice number	The computer fills these items into the invoice and you cannot alter them here.
Invoice Date	This is the tax point for VAT. It must be in the current (or a future) bookkeeping month.
Supply Date	Useful as a note, for example the date when the goods were supplied. Can be left blank.
Your Ref.	Any note (eg. Order Number or a name). Can be left blank. This will be printed on the Daybook. If you entered anything in the NOTE Field on this customer Record; it will appear here by default.
Our Ref	Any note or reference (eg. Delivery Note nbr.) or can be left blank. This will be printed on Daybook.
Trans. Type	Any brief note. Can be blank.
Sold By	Initials of salesperson; or any note. Can be blank.

Delivery Ref.	Any note, for example the method of delivery, or our Delivery Note Number. Can be left blank.
Delivery Address	Defaults to same as invoice address. You can enter any different address here, or leave it blank. Or click the button to select or edit a stored Delivery Address for this Customer.
Special Instructions	Can be left blank, or you can enter any notes or instructions as required. If you do enter a message here, you can enhance it by printing an attention grabbing border -- see the Message Border tab.
Notes	Any further notes or instructions.

Special Invoice types

You can modify the behaviour of an invoice in several ways, for example:

Cash-with-Order Invoice (if the invoice is being paid immediately). This is just a short-cut to save you having to separately go and mark the invoice paid later.

VAT-inclusive Prices. Instead of entering net price, and letting ABC add on the VAT, the VAT-Inclusive Invoice takes the prices you enter as already containing VAT; ABC will then automatically separate the VAT and show it on the invoice.

VAT-only Invoice. Not a common requirement for most businesses, but some companies need these (eg.import/export agent). This is an invoice with zero value of goods, but an amount of VAT.



1. The VAT-only option will override any other special invoice selections.

2. Only the first line can be used, and the Amount is taken to be the VAT (and put against VAT rate 1)

Invoice at Zero VAT rate. For certain categories of customers only.

Used Car special VAT scheme. If your business includes selling used cars you can print customer invoices that do not show the VAT (which will be calculated on the difference between cost and sales price).

To specify one of these special types, see the OPTIONS tab page.

Delivery Address

ABC allows you to store multiple delivery addresses for any customer. Click the Delivery Address button on the Invoice Top/Bottom to view/edit/add addresses.

Customer Reference

Several Fields from the Customer Record will be filled into the Invoice Top. You can also use the last stored Invoice Top for this Customer as the basis of the new Invoice -- see Options tab page.

Body of the Invoice

The body of the invoice can contain up to 198 lines.

Some lines may contain just descriptive text, and you can leave blank lines between items if you wish (to make invoice prettier).



To make the invoice lines deeper, drag the line down at the left hand edge of the Invoice. This lets you have long item descriptions.

Use the mouse or cursor keys to move to the line you wish to change then, to edit the line, double click, or press ENTER, or click EDIT.

Each line contains the following Fields.

Field	Description
Quantity	The number of these items you have sold.
Stock Ref.	A Stock Code. Enter ? to select from Stock File. Leave blank if you don't want an item from Stock.
Description	Enter a description of this item. If you have used a Stock Code; ABC can fill in the Stock Description here.
Unit Price	Enter the unit price of this item (excluding VAT unless you are working with VAT-inclusive prices).
Discount	You can enter a trade discount that applies to this line only. Either enter a figure; or a percentage (eg 3%). This discount can be positive or negative (ie. a surcharge).

Amount	The net amount for this line (ie. excluding VAT unless you are working with VAT-inclusive prices). ABC can calculate this from the Quantity, Unit Price and Discount.
VAT Code	Enter the CODE to specify which rate of VAT applies to this entry line. page 108
Heading code	Enter an Analysis Heading Code. page 107

ABC will check each line and alert you to any problems. You cannot Finish the line until you correct any errors.

While entering the lines you can right-click the mouse for editing functions including Copy, Insert, Cut, Clear, or Paste lines.

When you have finished editing the invoice you have the options to print a ProForma Invoice, Hold the Invoice (store on disk as a part-finished Invoice), or Finalise the Invoice). The invoice can be edited or deleted at any time until you Finalise it -- thereafter it cannot be changed. (It only gets posted to the accounts when it is finalised).

Print the Invoice

A Part-finished Invoice can be printed as a Proforma Invoice. The *proper* invoice can only be printed after it has been finalised. It is possible to reprint old invoices at any time ([page 29](#)).

If you are entering details of hand-written invoices you may choose not to print anything. Invoices can be emailed, or printed on a dot-matrix printer using a Text-Only Layout that you can easily customise -- [page 116](#).

Delivery Advice Note/Estimate/Quotation

You can print any of these items by selecting from the Options tab page. These are copies of the invoice but you can choose the words printed at the top, and whether or not to show prices.

Credit Notes

Create an invoice as normal but arrange that the final total is negative. This can be done either:

- a) by entering a negative price and no stock code. This will not affect the Stock File
- b) by entering a stock code and putting the quantity negative. This will put the items back into the Stock File (eg. if the Credit Note is for goods returned to you).

When this negative invoice is printed, the words CREDIT NOTE will appear instead of INVOICE.

Settlement Discount

If you have ticked the Settlement Discount box (Customer Record -- Options tab page) then the settlement discount terms will be printed on the invoice. For example, 2% discount for payment within 7 days.

Link to the Stock File

You can call a description and price from the Stock File. This saves you typing the information, and of course ensures the price is right. You will find this useful even if you don't need Stock Control at all, as you can store lines of text that you often use on invoices -- [Page 34](#).

Enter a Stock Code on the Invoice (or select from the drop down list) and ABC will fill in the description, price, VAT Code and Analysis Heading from the Stock Record.

If you have entered a Quantity, then it will be deducted from the Quantity in Stock Field on the Stock Record Card.

Picture (company logo) on Invoice

To make your invoices look more professional and businesslike, you can print your company logo (or any small picture) at the top. You can change the picture or turn off this function on the Options tab page.

Message with border

You can print an attention-grabbing border around your message at the foot of the invoice. The Message Border tab has several choices, including No Border. If you do not enter any text in the Special Instructions box on the Invoice Top/Bottom, then no border will be printed anyway.

Corrections and Adjustments

In general, you should always make any corrections or adjustments by creating a new transaction. From experience we have found this is the best and safe way to keep Accountants and Tax Inspectors happy, and to make it clear what you have done.

For example, if you invoice the wrong company or for the wrong amount you can correct the situation most neatly by creating a Credit Note to cancel the incorrect invoice. In the Reference Field of the Credit Note put the Invoice Number of the original invoice. And then start the invoice again.

5

Printing reports

Viewing lists, labels, summaries
on screen, paper, or to disk file

When you select any Report in ABC, it is displayed on screen in the Preview Window ([page 114](#)). This allows you to check the contents; zoom in or out, and move from page to page. Select PRINT if you need to send the report to paper, and you can then select a printer and maybe a range of pages. Or select EMAIL to attach this report as a PDF to an email.

It is also possible to export Reports to a disk file, for example in PDF, CSV or HTML format for use in other applications, websites or email. Select EXPORT > PDF, CSV, etc.

Sales Invoices and Statements have an additional option to allow you to email them directly, or to send to a dot-matrix printer (eg. for multi-part ncr sets) using Text-Only print layouts that you can easily customise to your own requirements -- [page 115](#).

Reports can be viewed or printed at any time, and as often as you wish. Plain paper is used for all printouts.

Most reports can be customised by setting options ([page 114](#)) to choose a range of dates, sorted order, and other criteria. ABC can be set to automatically print your choice of reports each Month and Year End.

In addition to the built-in bookkeeping reports, you can design your own reports and labels to print information from the Accounts files or your own files.

This chapter lists all the built-in bookkeeping reports, with a few notes pointing out any unusual features or options.

We do keep adding more reports to ABC in response to user requests, so your copy of ABC may include extra reports not mentioned in this manual.

Sales (Customer) reports

You can select the following reports from the Sales Ledger Menu.

List Customers	A list of Customers showing their company name, address, telephone number, etc
Customer Statements	Normally you print Statements to send Customers a reminder of unpaid items but it may be useful to also show items they have paid recently. ABC options allow you to choose what to show on the Statement, and who to send Statements to. Typically you would produce Statements at the end of each month. Also note: While looking at a Customer Record Card you could produce a quick Statement by clicking the ribbonbar button.
Customer History	Lists all transactions. Choose a range of dates and whether to expand invoices to show full details or just show invoice totals. Also note: While looking at a Customer Record Card you could produce a quick History by clicking the ribbonbar button..
Aged Debtors	List of everything currently owing to you, divided into several age ranges. Telephone numbers are printed making this a convenient list for chasing overdue debts. “Future” items are not yet due. There’s an option to show all invoice details.
Money Received	A list of all money received in payment of sales invoices. (Reminder that CashBook income -- eg sundry cash sales-- are not included in this report but can be found in CashBook Receipts page 72).
Sales Daybook	List all invoices and credit notes. This is one of the basic reports required by your accountant and VAT Inspector.
Sales Audit Trail	Like an expanded version of the Sales Daybook but the Audit Trail also shows every line from each sales invoice (you can select the range of dates). It is mainly useful for tracking errors or auditing.
Unpaid Invoices	A list of invoices not yet marked as paid (as of today’s date). To mark an invoice as paid you Allocate money (or Credit Notes) against the invoice. (page 43)
ProForma Invoices	A list of ProFormas (uncompleted invoices). These do not affect the accounts until “Finalised”.

Reprint (or view) old Sales Invoice (Zoom)

On the Customer's Record Card right click on the old invoice and select ZOOM (or reprint). First set the grid to show History.

Letter, Label, or Envelope for one Customer

At the Customer's Record Card click a button on the ribbonbar. ABC can then automatically fill-in their address on the label, envelope or letter. You can edit these items and customise them with your own logo or picture

Letters or Labels for a group of Customers

Use TYPING > MAIL-MERGE ([page 93](#)) to print letters.

Use FILING > LABELS ([page 87](#)) to print sheets of labels.

Purchase (Supplier) Reports

You can select the following reports from the Purchase Ledger Menu.

List of Suppliers	A list of your Supplier's company name address telephone number etc.
Supplier Statements	List all outstanding items for each Supplier. Also note: While looking at a Supplier Record Card you could produce a quick Statement from the ribbonbar.
Supplier History	The Supplier History Report lists all transactions and you can choose several options. Also note: While looking at a Supplier Record Card you could produce a quick History from the ribbonbar.
Aged Creditors	List everything you currently owe, divided into several age ranges. Future items are those not yet due for payment.
Money Paid	A list of all money paid against Purchase Invoices (Unpaid Bills). You can specify a range of dates. (This report does not include any petty cash payments made through the CashBook. Those are shown in CashBook Payments report -- page 72 .)
Purchase Daybook	A list of all Unpaid Bills (Purchase Invoices) and Debit Notes entered during the range of dates you specify. This is one of the basic reports required by your accountant and VAT Inspector.

Purchase Audit Trail	Like an expanded version of the Daybook, but the Audit Trail also shows every line from each Purchase Invoice -- you can specify a range of dates. Mainly useful for tracking errors or auditing.
Bills still unpaid	List of items not yet marked as <i>paid</i> (as of today's date). To mark an invoice as paid you Allocate money (or Debit Notes) against the invoice.
Purchase Orders	List of Purchase Orders showing status and total value. *** Only if you have the optional Purchase Order module ***

Zoom (view or print) an old Unpaid Bill

At the Supplier's Record Card right-click on an old invoice and select ZOOM (to view or reprint)

Letter, Label, or Envelope for one Supplier

At the Supplier's Record Card click a button on the ribbonbar. ABC can then automatically fill-in their address on the label, envelope or letter. You can edit these items and customise them with your own logo or picture.

Letter or Label for a group of Suppliers

Use TYPING (MAIL-MERGE) ([page 93](#))

Use FILING (LABELS) ([page 87](#))

Stock Reports

You can select the following reports from the Stock System Menu.



You can use the stock File to store bits of useful text which can be called up when invoicing to save you time and typing effort. These text-only Stock Records will not appear in the following reports. ([page 34](#))

Stock List	List of all your stock items showing their location quantity in stock on order and allocated and price.
Stock Valuation	List all stock items showing the quantity in stock and the cost price. These figures are multiplied together to get the value of that stock item and at the end of the report the total value is shown. It is a good idea to print this report at the end of each month and then enter the stock value into the Accounts.
Blank Stock List	List of all stock items showing the quantity that the computer thinks you have in stock with a blank space for you to enter the actual figure. Print this list whenever you need to check your stock figures (stock-taking or inventory). By using this list you will ensure that you do not overlook any stock items. When you have completed the stock-take, compare the computer stock quantities with the actual figure and enter any ADJUSTMENTS into the computer.
Stock Sales	Shows how many of each Stock item have been sold this month this year and the average per month. This is a useful guide to help estimate what minimum stock levels and re-order quantities should be, and see which items are selling well.
Price List	List of all Stock item descriptions and selling prices. Prices are shown with and without VAT, and the price list can be printed for Price Group 1, 2, or 3.

Picture Price List	Prints a Price List with pictures of the Stock Items.
Stock Audit Trail	Full Audit Trail of all stock movements in or out for the range of dates you specify.
Needing Re-Order	Shows items where the Quantity in Stock is below the Minimum Stock. Re-order Quantity is calculated using: $\text{Reorder Qty} = \text{Reorder Qty} + \text{Allocated Qty} - \text{Qty on Order}.$

Nominal Ledger reports

You can select the following reports from the Nominal Ledger Menu.

List of Headings	Also called the Chart of Accounts. A list of all your Analysis Headings showing the Analysis Code and the type of each Heading (ie Debit or Credit). It also shows the overall structure of the way you are analysing your business. Your accountant will find it useful to keep this handy when checking other Bookkeeping reports.
Trading (P&L)	Also called the Profit & Loss Report. This shows all Sales Purchases and Expenses during this period and then a calculation of your Gross Profit and Net Profit. Can give you an overall picture of the business and an idea as to which parts are making money and where you are spending most money. You can alter the layout of this report by changing the sub-title and sub-total Headings.
Trial Balance	Lists all Nominal Accounts with their current balances. The total of debit accounts should be the same as the credit account total if your books are in balance.
Balance Sheet	This produces a working Balance Sheet. If you are an expert at accounting and have entered pre-payments, accruals, depreciation, etc into ABC then this report could form the basis of the Final Balance Sheet for a small business.

Heading History	You can specify a range of dates and Headings, and how you want the items sorted. The report will show all entries in that range, grouped by Heading, and showing any VAT. .
Audit Trail	This is simply a list of all transactions. This is mainly useful for error checking.
Bank Reconciliation	Can be printed from the Bank Reconciliation function (page 54).

VAT 100 Report (VAT Return)

You can print a VAT Return for any range of previous months, and choose normal or cash VAT Accounting. You should print this report after doing the Month End for the last month in your VAT quarter.

Nominal Ledger > VAT Reporting System > VAT Return

The options Tab Page allows you to specify the range of months, and also to choose whether to include a VAT Audit and a list of unpaid Sales and Purchase invoices (with Cash VAT Accounting, the VAT on unpaid invoices is not yet due.)



If the end of a VAT period does not coincide with the end of your accounting year we recommend you ask your local VAT office to adjust your VAT period so it does match your bookkeeping periods. Check with your accountant of course, but it makes life easier for everyone and avoids extra calculations at year end.

All businesses must submit their VAT Returns Online. ABC has got HMRC approval to do this. Before using the Online function from the VAT Report tab, you must view your VAT Return on screen and check that the figures appear correct (you should have a rough idea of the total sales, total purchases, etc month by month) before proceeding.

The first time you use this Online function, you will need to enter your VAT Office reference and password (obtained from HMRC).

ABC Allows for the Annual Accounting Scheme. If necessary you can enter

any AAS Balancing amount before submitting your Online Return. If you are on normal Monthly or Quarterly VAT, you can ignore the AAS box.

After submitting your Online VAT return, ABC will display the reply from HMRC VAT Office. You should print this reply and file it with your books.

VAT Audit

This report lists all transactions involving VAT.

Nominal Ledger > VAT Reporting System > Full VAT Audit Trail

Special VAT Schemes

Some VAT Schemes require an adjustment to your accounts at the end of the VAT quarter. You must enter this adjustment (using Nominal Ledger Transfers), and ensure that you only enter it once.

CashBook Reports

You can select the following reports from the CashBook Menu.

CashBook Sales	You can specify a range of dates and this report will list all CashBook Receipts (eg. sundry sales) entered during this period.
CashBook Payments	This could form your Petty Cash DayBook. Specify a range of dates and this report will list all CashBook Payments made during this time.
CashBook Bank report	A list of all Bankings entered during the range of dates you specify. Each bank account is shown separately. This report should contain the same items as the bank Statement you receive from your bank -- making it easy to compare the two looking for errors and omissions.
Bank Statement	Similar to your real bank statement this report shows a list of all Receipts/Payments to a bank.

Design your own Reports or Labels

Use FILING to design your own reports or labels to print data from the Accounts files. This will not affect the accounts data. [page 86](#).

6

Month & Year End

Closing each Month
Closing the accounts Year

General Notes

At the end of each month you must use the Month/Year End function to close your accounts for this month and set the *current bookkeeping month* to the next month.

NOTE: When you get to the end of your Accounting Year, ABC will automatically also run the Year End as well as the Month End..

Run the Month End

Accounts Utilities > Month/Year End

Once you have got used to the system you might find it helpful to draw up your own Month End Check List and tick off each item as you do it. Here is an example:

Month End Check List

- Enter all petty cash purchases
- Enter all bankings
- Enter Standing Orders, direct debits, from the bank statement.
- Look through bank paying-in book to ensure all cheques have been entered and invoices marked paid
- Check that you've entered any PayPal, Amazon, or eBay costs as well as any sales or purchase transactions.
- Print Customer statements

Hints & Tips

ABC will encourage you to make a Snapshot or Backup at Month End.

Before doing the Month End you normally should check that you have entered all the petty cash purchases, bankings, standing orders, etc. If you have any online transactions or PayPal purchases, remember to enter these as well. And with online trading (eBay, Amazon, PayPal, etc) you may need to log-in to your account online and download a full list of all the charges.

Many people wait a few days after the end of a calendar month before doing the ABC Month End, to allow for late arriving Purchase invoices to be entered. This is OK, but we suggest you do not wait too long -- 7 days should be ample. Anything that arrives after that can be posted into the following month accounts.

If you print Customer Statements just before you do the Month End, you will get different results than if you print them just after Month End (ie. when all transactions are then shown as being another month old). Decide which suits you best.

Step 1 Step 2 **Step 3** Step 4

3. Print MonthEnd Reports (optional)

You might want to print reports showing what has happened this month. Tick the boxes you require and then click PRINT. (Most reports can also be printed at any later time -- exceptions are the Trading, Balance Sheet, and Aged Debtor/Creditor Reports; if you want these then do print them now. (Instead of printing on paper, you could export to PDF).

Sales ledger

- Sales DayBook
- Sales Money Received
- Sales Audit Trail
- Aged Debtors

Purchase ledger

- Purchase DayBook
- Purchase Money Paid
- Purchase Audit
- Aged Creditors

Cashbook and Bank

- PettyCash expenses Book
- Sundry Sales (income) Book
- Banking DayBook
- Bank Statements

Stock

- Stock Audit

Nominal ledger

- Trial Balance
- Profit/Loss report
- Balance Sheet
- Nominal Audit Trail for this month only

No print required

Save

Print

Status

You can set ABC to automatically print a selection of reports on paper as part of the Month End process. (These days many people do not print anything at all on paper at Month End. ABC allows you to print reports later, as required, and you could store them to disk as PDF files which can be printed anytime if required. The exceptions are Balance Sheet, Profit & Loss, and Aged Debtors/Creditors -- these cannot easily be reprinted later, so do print them at Month End if you need them).

At the end of year

If this is the last month of your financial year ABC will automatically do the Year End as well.

This moves This Year figures into the Last Year boxes, and sets This Year totals to zero. In the Analysis Headings, the Trading Accounts are set to zero, and the Profit/Loss for the year is carried into the Balance Sheet (you might adjust this later when your accountant gives you his figures).

As part of the Year End process, you should print certain reports on paper that cannot be printed at any other time. These include:

- Trial Balance
- Profit & Loss (Trading) report
- Balance Sheet
- Aged Debtors/Credits reports

Hints and Tips

Take a copy of the *Letter to the Accountant* ([page 76](#)) with your books when you take them to your accountant.

Your accountant does not need to go near the computer in order to audit your books, or prepare your Balance Sheet and end of year results. However, we have often supplied accountants with a copy of ABC so they can receive your books on a USB stick or flash drive.

Letter to the Accountant

Dear Accountant,

The ABC Accounts software is mainly a bookkeeping system intended to make life easy for a small-business owner who does not understand accounting.

Throughout the package we have tried to use non-accounting words. For example, instead of Nominal Account we have used the term *analysis heading*. Similarly, the operator does not need to know anything about debit and credit; the computer takes care of this side of things, and always keeps the books balanced.

We even suggest that if the operator has no idea about accounting they can virtually ignore the balance sheet and just take care of the trading side of the business; ie. invoicing, paying bills, sending statements, entering receipts and payments. The more complicated balance sheet side can be left to you, the accountant.

A likely scenario is that the user will have entered everything into ABC during the year, but that the opening Balance figures have probably not been set -- the result being that the computer Balance Sheet and Trial Balance totals will need adjustment. (ABC is a full double-entry accounts system, and in the hands of a knowledgeable person it could produce final accounts).

ABC can print a wide range of Daybooks, Audit Trails, Money Paid/Received, and other reports. Most of these can be produced for a range of dates (eg. the whole accounting year, or a particular few days), and a range of Headings (ie. nominal expense codes). ABC retains accounts data for previous years, so you can ask the user to print out (for example), all telephone expenses for last year, or proprietor drawings during January-March two year's ago.

Tell the user what you need. If they need assistance to find it, they will ask us. If you request something that ABC cannot produce -- we will work to very quickly enhance the software so that it can do it.

It is likely you will need to work out depreciation, prepayments, stock adjustments, etc. You may give these adjustments to the user to enter into their ABC Accounts, to bring the computer into line with your real world figures.

If you'd like to discuss this further, or suggest any improvements for this Accounts Package, please contact us

Email: enquiries@abc6.co.uk

Website: www.abc6.co.uk

(full technical specification of ABC can be found on the website)

7

Customise ABC

Edit company parameters,
Extra Companies, Passwords
Screen Colours, Font sizes

This Chapter describes how to set your own Passwords, create or delete additional sets of accounts (you can run more than one business with this copy of ABC), edit your Company Address details, and specify the next Invoice Number or other Folio numbers. You can also customise the way ABC looks on screen. See also our Newsletters and User Forum for ideas.

Edit Company Parameters

Accounts Utilities > Edit Company Parameters

Choose the appropriate tab to view or edit any of the following:

Company name and address

Fill in your company address details. These will be printed on invoices, reports, envelopes, etc, so check carefully.

Logo (picture) for top of reports

You can choose to print a picture (usually your company logo) at the top of reports. This feature can be turned off.



If you don't have a suitable small picture file contact us for advice. The file should one of the following formats: .JPG .BMP .GIF .WMF .ICO. Maximum filesize is 50K. We suggest creating the picture about 7cm wide by 3.5cm high and about 96dpi. Store the picture in the ABC company data folder. eg. for Company A it will be \ABC6\A_DATA.

A similar picture or logo can be printed at the top of Invoices and Statements. You can use the same picture for all, or choose different pictures. To set the Invoice or Statement logo, see the Options tab when printing an Invoice or Statement.

Folio & Invoice Numbers

Do not change the Invoice or Folio numbers without good reason. Accountants are suspicious of daybooks or audit trails that have gaps in the numeric sequence.

There are several sets of Folio Numbers. [page 21](#)

Accounting Year

Set the start month and end month of your accounting year. Normally you would have 12 months in your accounting year, but this is not compulsory.

It is a bad idea to change the current accounting month once you have started using ABC. If you feel you need to do this, please contact ABC support to discuss it -- we usually can suggest alternatives.

View All

This tab page displays all the settings and options stored in the parameter file for this company in ABC. It is intended just for trouble-shooting or maintenance work and you cannot change anything here.

Options

Some general User Interface options. For example, experts can tell ABC not to require the EDIT button to be pressed before you can edit a record card.

Two different types of email system are available. MAPI is to be preferred.

During day to day use, ABC stores some non-essential data in Windows Registry. Occasionally something may go wrong and a non-valid setting in the Registry cause ABC not to work properly. The button on this page to CLEAR REGISTRY SETTINGS sets everything to a safe default value.

Stock

Several parameters can be set here, including the number of decimal places to use, and the type of New Stock Cost calculation -- eg. Last In or Weighted Average. ([page 38](#))

Passwords

You may not want everyone who walks past your computer to be able to view your accounts or change records. ABC can restrict access to people who know the correct password.

Accounts Utilities > Passwords

The Passwords tab page has a box you can tick to turn the Password System On or Off. A table shows all your Passwords.

For each line you can enter:

Password	Up to 6 characters
Note	Any note about this password (can be left blank)
Level	1 to 9. (9 is the highest).

You can have up to 20 different passwords, and each can be set to a level between 1 and 9. The different levels of password allow access to various parts of the package as follows:

Level	Access permitted by this level
1	Cannot clear or delete files or records. Cannot access Bookkeeping; Payroll; or secured files.
2	Cannot delete files. Can make entries into Bookkeeping; but not view Profit/Loss or Bank. Cannot run Month end. Cannot access secured files. Cannot run Payroll.
3	Can delete files. Cannot run Month end. Cannot run Payroll. Can view secured files.
4	Can do most things including Month End and Payroll. Cannot change passwords or zero accounts; or use Filing to edit accounts.
9	Full access to everything; no restrictions

If you want to set the same level for all areas, just set the last column -- the rest of the columns will then be set to that level. At least one Password must be the highest level for the Utilities area (since this is necessary for editing the Passwords).

You can turn OFF the Password security system in ABC, and then you will never need to Log-In (also, anybody could view or edit your accounts files). Or you can set up a complicated set of different Passwords, each allowing access to just some areas of ABC; for example the ability to view (but not

change) Sales Invoices, and full access to CashBook. Note that if you allow someone to access FILING, this allows them to also view the Accounts files.

Each Company you set up in ABC will have its own set of Passwords.

ABC does not encrypt the data in its files. The password system is only to deter casual passers by using ABC to view your accounts. A computer expert could easily view the files directly without using ABC.

Other Companies

ABC allows you to do the bookkeeping for up to 26 different Companies, and we call them Company A, Company B, etc. Each will have its own folder on the hard disk, and there is no interaction between the different sets of accounts.

Accounts Utilities > Rarely used function > Other Companies

The top of the screen always shows the Company Name of the set of accounts you are working on. If you change any account options, or use Snapshot, Month End, etc, you are only affecting this one Company.

You can quickly switch to a different company (but first close down whatever function you are using). Just Log-Off and then when you Log-On you can choose which company you require.

Create new Company

You can create new companies here. The first thing you should normally do after creating a new company is to follow the procedure for setting up the accounts. [page 13](#).

Delete a Company

Do not proceed unless you are sure. If in doubt, make a Backup first. (Not a Snapshot). You cannot delete Company A.

Other functions

Some other functions are provided, for example to copy accounts files from one company into another.

You can view a quick summary of each company

Customise the screen

Use the OPTIONS Menu (top right of screen) to change things like screen colours, font sizes, and visual theme (the “look” of ABC).

8

FILING

Create your own Files
Design and Print Reports and labels

The Filing option on the Main Menu is a simple database and report generator that allows you to store and edit your own information, and print lists, reports, and labels to your own design.

Filing can also be used (password permitting) on any of the ABC account files.



ABC stores its data in MS Access type databases. We refer to “files” but in MS Access they are called “tables”.

Open a File

Filing > Open a File

Select which database you require -- Accounts Files, Filing (your own Files), or any other MS Access type .MDB database. A list of Files (Tables) in that database is then displayed for you to select from.

You can view the Records in two different ways. Either as a Record Card (one Record at a time, as in older versions of ABC) or a Grid (Table), (each Record occupies one line). Switch between these views at any time.

In the Record Card view you can use the Select Record functions ([page 109](#)) and you can click Edit, Add or Delete on the ribbonbar. Before being allowed to edit an Accounts File you need to enter a special password (obtainable from ABC Direct Sales). After editing, choose Save or Cancel.

While using Grid View, scroll up and down, click on column headers to sort into order, select groups, or rearrange columns ([page 112](#)). The Grid is

similar to a Spreadsheet, and you can simply click in a cell and edit it (but with Account files, you can only do this if you have entered the password). Add a new Record by typing into the blank line at the top of the Grid.

Customise a File

You can change various properties of the Record Card to make it better suit your requirements. This includes adding or deleting Fields, changing the size or type of Fields, renaming Fields, and specifying which Fields to use for printing address labels. You can set a Field to be “auto-number” (eg. useful for serial numbers) or “auto-date” (fills in today’s date whenever you edit the Record).

Open the File, and then from the ribbonbar select EDIT PROPERTIES.

Take care before using this powerful function. For example if you delete a Field you will destroy all information contained in that Field throughout the File.

The properties are displayed in a Grid, and you can edit any of the details. With Account files, ABC will not let you change properties that are important to the accounts. Right-Click to Add or Delete a Field.

It might be useful to print these properties before and after changing anything. Click Print Record Properties on the ribbonbar (or see next section).

With a new file it is a good idea to set the FieldNames and FieldTypes BEFORE you start creating Reports and MailMerge Letters that use this File (Otherwise when you change a Field’s Name you need to also change every Report or Letter that contains this Field).

For each Field you can set these properties:

	Notes
Field Name	Must be unique within this File. We also suggest you keep it unique within your database -- the easiest way to ensure this is to prefix each Name with an abbreviation of the File Name. eg. if the File is called Dog Club Members we’d suggest Field Names like dgmBREED dgmOWNER dgmTELEPHONE.
Field Length	Text Fields default to 50 characters long but you can set a maximum length of 255. Be generous with the Length for Text; it is better to set it a few characters bigger than too small. Numbers and dates are stored in compacted form so ABC may set the Length to the correct required value

Field Types	The default type is Text but you can set various other types such as Date or number (long Integer is a number with no decimal places). You can also (see table below) specify a Field to be “auto-number” (eg to increment Membership Numbers) or “auto-Date” (today’s date is filled into a Record whenever you edit it).
Format style	The default is “None” but you can specify that ABC formats a Field to Uppercase (capitals) or other style.
Order of Edit	This sets the order in which Fields are displayed on screen in the Record Card View. The top field Order of Edit is 1 then 2, 3, etc.

Other properties that can be set

(ABC will have set these to a default value, but you can change them at any time).

	Description
Unique Field	If a Field will have a unique value for each Record in the File specify the FieldName as the Unique Field (ABC then uses it as an Index). For example the Customer File has the Account Number as the Unique Field.
Find Field1 Find Field 2 Find Field 3	Specify three Fields (enter FieldNames) you want to use to locate Records when you are in the Record Card View.
Label Line 1 Label Line 2, 3 etc	Specify the FieldName you want to print on line 1, line 2, line 3, etc of an address label or envelope. From now on you can simply click Print Envelope (or Label) and ABC will know which Fields to use.
Auto Number	If you want to set a Field as “auto-number” enter the FieldName. When you then ADD a new Record ABC will lookup the last number entered in this Field, increment it by 1, and fill it into this Field for you.
Auto Date	If you want to set a Field as “auto-date” enter the FieldName. When you then EDIT any Record ABC will fill today’s date into this Field.

Print Record Properties

This will produce a printout of the Record Card layout showing the Fields (names, size, type) etc. Useful to document your Files.

Open a File, and from the ribbonbar click **Print > Record Properties**.

Design your own File

You can create new Files as needed, to your own design. The way to do this is to choose an existing File to copy as the basis for the new File (the existing File is not affected at all). ABC does have some sample Files to get you started. You can then customise this new File by adding or removing Fields, renaming Fields, etc.

Copy a File

Open the File, and then from the ribbonbar select **Tools > Copy File**

Give a name for this new File. It will be added to the same database as the original File (you cannot copy files into the Accounts database).

Import or Export data

A common method of storing data in disk files is in standard ASCII (pronounced Ass Key) text files. Most software products can read and write to this type of file, so it has become a universal method of transferring information.

The most common format is the comma delimited ASCII file. (usually with a .CSV file extension).

ABC allows you to read (import) or write (export) ASCII files in a variety of different formats.

Open the File, and from the ribbonbar select **Tools > Export (or Import)**

Import an old ABC5 File

Filing > Create New File > Import from ABC5

This function will read an old ABC5 file and create an equivalent new File in ABC6 in the Filing Database. All the records are automatically copied into the new File. This does not affect the old File at all.

Because ABC5 cannot provide a name for each Field, ABC6 calls them Field1, Field2, Field3, etc. One of the first things we recommend you do is to Customise the new File ([page 82](#)) and set the Field Names to something meaningful (eg. CompanyName, Telephone, Postcode). It is a good idea to do this before you start designing reports or mailmerge letters because these require you to specify the Field Names.

Global Change

This most powerful function allows you to specify a change to a Field of the current File. The same change can then be performed to all (or a selected group of) Records in the File.

Open the File, and from the ribbonbar select Tools > Global Change

Specify which Field you want to change and enter details of the new contents for the Field -- this can be a calculation. Also decide which Records in the File should be affected. A SQL Wizard can help you enter quite complicated selection criteria.

ABC will allow you to test the change (and see how many records will be affected) before you finally start the Global Change in operation.

Global Change has a box you can tick if instead of changing records, you wish to Delete the selected records.

Clear a File

All Records are removed to leave you with an empty File. The data is permanently deleted, so ABC makes sure you wish to proceed.

Open the File, and from the ribbonbar select Tools > Clear File

Delete a File

The File will be completely erased from the database, and its contents permanently erased -- so ABC makes sure you wish to proceed..

Open the File, and from the ribbonbar select Tools > Delete File

Design your own Reports

The ABC Report Designer allows you to choose a data File, select some of the Fields and position them on the report layout, and specify Grouping of Records and Sorting Order. You can enhance the Report with a picture (eg. company logo), Heading and Footer, and specify various types of calculation to produce totals.



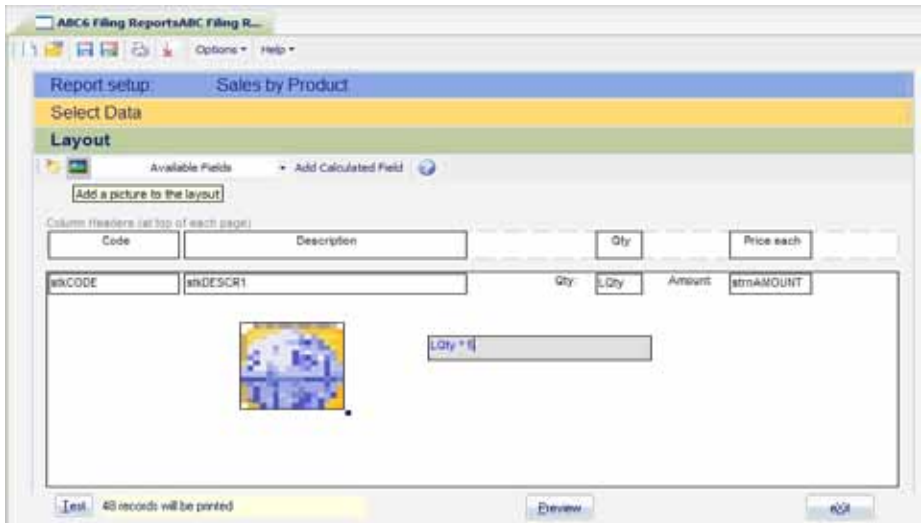
Experts can edit SQL statements to select Records from joined Tables. ABC has a SQL Wizard to help.

You can use the Accounts Files in your reports, giving you the ability to create your own accounting reports to meet your requirements. You can Save Reports and simply Load one when you want to print it. Reports can be previewed on screen, printed on paper, or sent to a PDF, HTML or Text File on disk.

Filing > Report Printing

From the toolbar choose LOAD (an existing report) or NEW (create your own). Beginners can simply Load and Print a report that may have been created by a more experienced person.

Click on the coloured tabs in turn to specify the records you want to use, and arrange the fields, labels, titles, etc on the Layout as you wish.



Step-by-Step report Design

As you complete one step, it sets up parameters (eg. a list of Fields) that you can use in a later step.

1. **SETUP Tab:** Give the report a Title, and optionally add some note to describe this report and what it will show (this note does not print).
2. **SELECT DATA:** Choose a database (Accounts or Filing). Specify which File (Table) to use. For the simplest report, just click on one of the displayed File names. If you are more experienced you can enter a SQL expression (the SELECT clause) to link (join) more than one Table together.
3. **SELECT DATA:** Choose which records to use. If you tick the USE ALL RECORDS box, all records will be included. Filters are created by using a SQL expression, and ABC includes a Wizard to make this a little easier. You can even set the report to ask the user to enter a parameter at the time the report is run. (simple books on SQL are available, or you can ask your support company or ABC Software to assist in designing a report).
4. **SELECT DATA:** Specify a field to Sort the records on, and choose ascending or descending order. If you wish your records grouped (sub-divided) choose a field to Group on. (If using Groups, you can print sub-totals for each group if you wish).
5. **LAYOUT:** click on the toolbar to add some fields to your report layout. You can also add text labels to describe a field, pictures, and calculated fields. Drag these items to move or resize them as you wish. There are three sections where you can add text -- the Column Headers (top of each page), Main Body of the report, and Report Footer (prints at end of the report -- here you might put totals).
6. **LAYOUT:** You can format items by right-clicking the item and select Properties. Change the font, text size, colour, etc. With calculated fields you can enter a calculation. To delete an item from the layout, right-click and select Remove.
7. **LAYOUT:** To align items, first Shift-Click on the items (a red box will appear showing they are selected) and then right-click on one and choose an alignment option.
8. **LAYOUT:** Totals Several types of totalling operations can be carried out -- Count, Average, Sum. Right-click on a field and select Properties to set up totals (up to 9 separate Totals can be used). In the report Footer specify which Total(s) you wish to print.
9. **Options Menu** (toolbar at top of the report window) allows you to choose whether to print separator lines between records, show page numbers, set page to be portrait or landscape, etc. If you have used

Groups then you can choose whether to print all the detail lines for each Group, or just a summary.

10. Remember to **SAVE** your report before trying it.
11. The **TEST** button will show how many records your current filter will show (If it seems the filter is having no effect, check you have not ticked the **Show All** box which will cancel any filter).
12. Click **PREVIEW** to see what your report looks like. If anything needs changing, go back and alter it. Trial and error is the technique.

Save the Report

From the toolbar at the top, select **Save** or **Save As**. (**Save** will overwrite the existing version of this report -- even if you've changed its title -- but **SAVE AS** will create a separate copy of the report that you can edit to change some features).

Report designs are stored in a file called **ReportLayouts.mdb** located in the \ABC6\GENDATA folder. Even if you have several Companies set up in ABC, these reports will work with whichever company you are currently using.

Delete the Report

From the toolbar at the top, select **Delete**. (The report must already be loaded in order to **Delete** it).

Preview or Print the Report

Click the **PREVIEW** button. This displays the finished report in the report viewer, and the toolbar at the top provides functions for printing to paper, or exporting to PDF or HTML file.

Label printing

The label function is intended for producing address labels for mailings to your Customers or Suppliers, onto A4 size sheets of labels (eg Avery). .

Filing > Label Printing

From the toolbar choose LOAD (an existing label) or NEW (create your own). Beginners can simply Load and Print a label design that may have been created by a more experienced person.

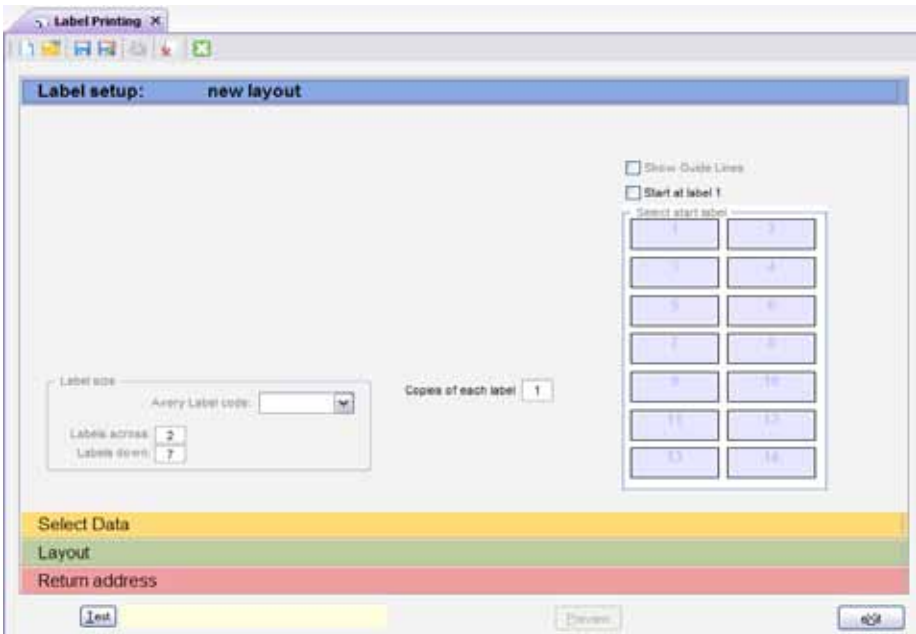
Click on the coloured tabs in turn to specify the records you want to use, and arrange the fields, labels, titles, etc on the Layout as you wish.

LABEL SETUP: Set the number of copies of each label to print.

To specify the size and layout of the labels you can select one of the AVERY label codes, or set the number of labels down and across a sheet yourself. When you change the label size, the Layout area is set to this size.

If the Start at Label 1 box is not ticked, ABC shows a representation of a sheet of labels, and you can tick the position you wish the first page to start printing (this is useful if you have a part-used sheet of labels).

SELECT DATA: This is identical to the section Select Data for Report Printing -- [page 87](#).



LAYOUT: You can make addresses look neater by ticking the box Tidy Addresses -- ABC will then try to remove blank lines in an address.

Tick the SHOW RETURN ADDRESS box if you want your own return address printed on the label. A separate tab page lets you define the address and set the colour for the text. Click the Company Address button to fill your own Company Address into the return Address fields, but you can edit this test as required.

Save the Label

From the toolbar at the top, select Save or Save As. (Save will overwrite the existing version of this label -- even if you've changed its title -- but SAVE AS will create a separate copy of the label.)

Report designs are stored in a file called LabelLayouts.mdb located in the \ABC6\GENDATA folder. Even if you have several Companies set up in ABC, these labels will work with whichever company you are currently using.

Delete the Label

From the toolbar at the top, select Delete. (The label must already be loaded in order to Delete it).

Preview or Print the Label

The TEST button will show how many records will be used for this label print. (If your filter does not seem to be working, check you have not got the USE ALL RECORDS box ticked).

Click the PREVIEW button. This displays the labels in the report viewer, and the toolbar at the top provides functions for printing to paper, or exporting to PDF or HTML file.



If the printer messes up part of the printout the report Viewer does allow you to select just a range of pages for reprinting.

9

TYPING

Edit Text, Print Letters,
Mail Merge

You can select TYPING from the Main Menu and use it as a simple wordprocessor (with MailMerge capability). And in various other parts of ABC you can select Print A Letter and this same “Typing” function will appear -- for example, while looking at a Customer Record you can produce a letter to the Customer.

Edit text

Change text size, colour or font.

Highlight a section of text and then choose a function from the toolbar at the top of the window.

If no text is highlighted, any changes you make will apply to all new text that you enter from now on.

To select ALL text, press CTRL+A

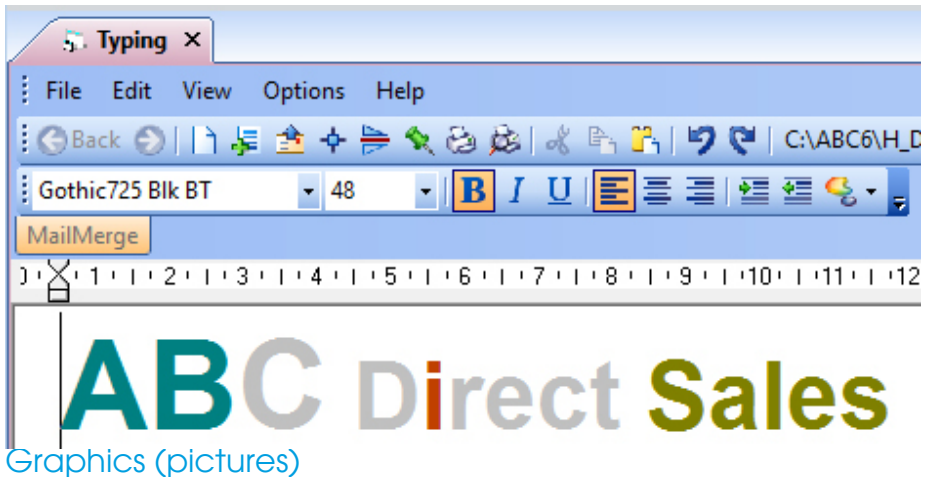
Ruler, Margins, Tab stops

The ruler across the top of the text shows left and right margins, indent, and any tab stops. These can all be set differently for each paragraph.

Click on a paragraph to make it into the current paragraph, and then drag the little triangular markers along the ruler to change the margins. The marker on the top of the ruler sets an indent (or outdent) for the first line of the paragraph.

Alternatively, right click the mouse on the ruler and a form will appear that allows you to set margins and tabs for the paragraph.

If you want to change several paragraphs at the same time, highlight them first. (CTRL+A will select All Text)



You can insert pictures into the text. Position the cursor at the bottom left of where you require the picture, and from the Options Menu select INSERT GRAPHIC. Choose any picture file (eg. .BMP) and it will appear on screen.

You can click the picture and then resize it by dragging the corners or sides. You can also move it to a different position, but note that the picture is treated like a big word -- it must be inserted into the text (it does not overlap any text). As you drag a picture, a small line cursor shows where it will be inserted when you release the mouse button.

Word Count

From the Options Menu select Word Count, and ABC will display the number of words in this document.

Find and Replace

Select FIND from the Edit Menu.

Spell Check

From the Options Menu you can choose AUTO SPELL and ABC will then check your spelling as you type and underline any suspect words with a red wavy line.

If you right click on a suspect word, you can select from several spell check options:

- Ignore All -- tell the Spell Checker that this word is OK.

- Add -- tell the Spell Checker to add this word to the Dictionary.

Spelling -- ABC will display suggestions for the correct spelling of this word. Sometimes these will be sensible....

To check through all the words in the document, select Spell Check from the Options Menu. ABC will display each suspect word in turn, with suggestions for its replacement.

Headers, Footers

A Header (or Footer) is a separate text file that ABC can automatically insert at the top (or bottom) of every page. This can include pictures or calculated fields such as today's date or page number. ABC allows you to specify which pages the Header should appear on (for example, even pages only).

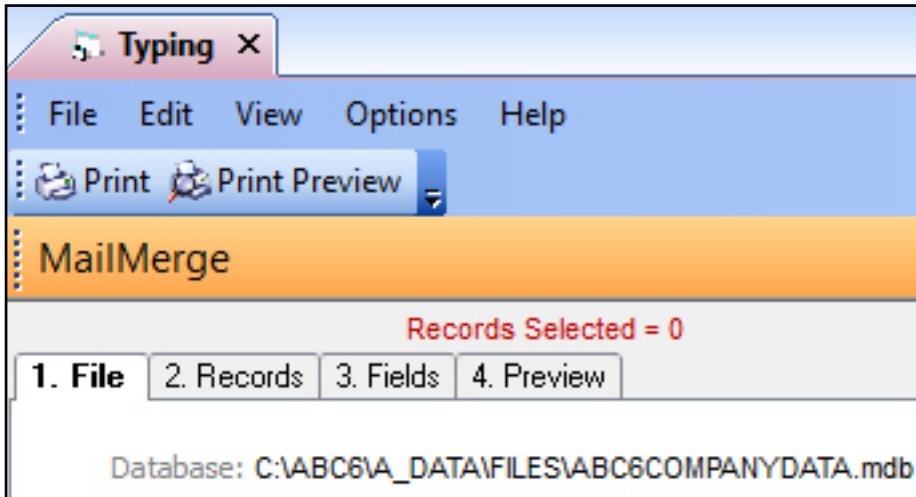
You should first create Header(s) and Footer(s) as separate documents. Then these can be loaded into any other document while editing it. From the Options Menu select Header & Footers.

The background colour of Headers and Footers can be set, along with their width, height and other properties.

Mail-merge

When printing letters or notes on paper, you can get ABC to automatically fill names and addresses or other information into the text. This is known as mail-merge. The data being inserted can come from any Record Card.

The MailMerge function can be turned On or Off. From the Options Menu select Allow MailMerge. Then click the MAILMERGE button and a new area with several tabs will appear at the top of the Typing window.



First select which File to use, from the File tab The other tabs allow you to specify which Records to use, and which Fields to use in your letter..

Specify a MailMerge Field in your letter

The easiest method is to click on a Field Name in the drop down list on the Fields tab, then click at the position in the letter you want to insert this Field, and type CTRL +V. This will paste the Field into your letter.

Preview while editing

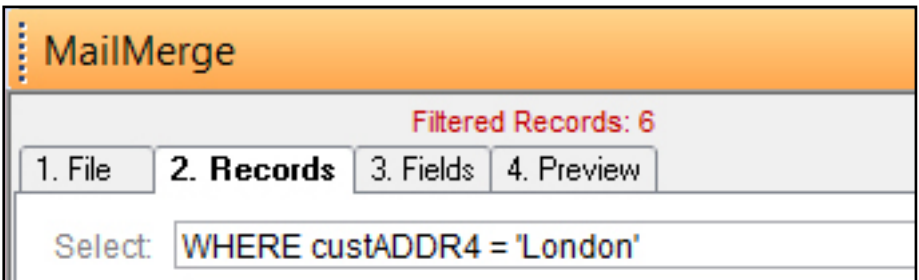
Click the Preview tab and ABC will merge data from the first Record into your letter. You can use the Previous < and Next > buttons to try different Records and ensure everything is working as expected. Close this Preview before you can resume editing the letter.

Choose a group of Records

On the RECORDS tab you can specify criteria to choose a group of Records.

Here are some examples (using the Customer File). When you EDIT a selection criteria and then SAVE, a line just above the tabs indicates how many records match the criteria.

- a) To select records where address line 4 is in London:
>> WHERE custADDR4 = 'London' (Note the single quotes reqd)



- b) To use all records. >> ALL
- c) To use Records where Account Number is between 50 and 100
>> WHERE custACCT > 49 AND custACCT < 101

The selection criteria you enter are using the SQL language. See [page 112](#) .

10

Spread Sheet

The ABC SpreadSheet is relatively simple, but it has the useful feature of Formulae to call data out of ABC Account Files, for example for CashFlow Forecasts. You can enhance your SpreadSheets by using different sizes and colours of text, and inserting pictures into cells. Approximately 500 columns by 500 rows can be used.

Spreadsheets can be imported and exported in various formats including MS Excel, HTML, and text files.

Edit Numbers or Text cells

Click on a cell, and just start typing. Enter a number or some text. The Options Menu allows you to choose what happens when you first select a cell -- whether to highlight all existing text or not.

Simply move out of the cell when you've finished Editing. Press the TAB key to move to the next cell, or ENTER to move down a cell.



Caution. It is easy to confuse yourself if you press ENTER while editing a cell which allows multi lines. In this case ENTER will simply move you to the next line within the cell (and probably scroll the first line out of sight so you are left wondering what has happened).

Insert or Delete a Column or Row

Position the cursor first, and then from the Edit Menu at the top, select the required operation.

Any formulae involved will be automatically adjusted.

Types of cell

Each cell can contain text, numbers, a formula, or a picture. Right click on

a cell and choose the type of cell you require from the pop down list. The default cell type is Any Text.

Type of cell	Description
Any Text	Whatever you enter here is treated as text.
Currency	This is a number that is formatted to two decimal places with a currency symbol.
Number	Any number.
Percent	Displays percentages to two decimal places and followed by a % sign.
Formula	This is not a separate cell type. It just provides a reminder that you must first set the cell Type to Currency, Number, or Percentage -- these are the only cell Types in which you can enter a Formula.

Formula

You can enter a Formula into any numeric type cell (so you may need to first set the type of cell as Currency, Number, or Percent).

Position the cursor on a cell and press “=”. You can then enter a Formula for that cell, or edit the existing Formula.

Each Formula can include

positions (eg. A21, G4)

numbers (eg. 1.15, 32)

operators (eg. + / * ^)

Where * means multiply, and / means divide by

^ means to the power of

You can also use brackets: eg $A2 * (A1 + 57.5)$

Examples:

$A3 + B17$ This will add the number at position A3 and the number at position B17.

$C5 + (C6 + B4) * 1.15$ Add number in cell C5 to 1.15 times the sum of the numbers at C6 and B4.

Keywords (functions) can be used in Formula. For example, words like AVERAGE, SUM, TAN, DATE, TODAY, MIN, MAX.

Examples:

$\text{sum}(A3:A17)$ add up the Range of cells between A3 and A17

`max(B4:F4)` use the maximum value in the range B4 to F4

`average(A3:A99)` use the average value of the range A3 to A99

In most of these Formulae, blank (unused) cells are ignored (ie. not included in average, etc)

Link to Nominal Ledger (Headings)

Information from any Heading (Nominal account) can be used within a Formula. The current information from the Headings File is inserted into the Sheet.

Use the special formula `hdg` to indicate you wish to use figures from the Headings File, and follow this with a word to specify whether you want the Current Balance, Last Year (opening balance), Month to Date, or Budget figure; and give the Heading number that you require.

Examples:

`hdgBUDGET(3351)` -- The Budget figure for Heading 3351

`hdgCURR(8411)` -- The current balance of Heading 8411

`hdgMTD(1111)` -- The Month to Date figure for Heading 1111

`hdgOBAL(4211)` -- The opening Balance figure for Heading 4211

Other Formulae

A vast range of other functions (keywords) and operators can be used in Formulae. For help with Formula, press F1 while using the SpreadSheet.

We can add custom Formulae to the ABC SpreadSheet, so contact us if you need anything specific to your trade or business.

Copy or Move or Clear a cell or block of cells

You can use the mouse to highlight a cell or block of cells, and then position the mouse at the edge of the highlight (so the cursor shape changes) and drag the highlighted area somewhere else. This will MOVE the original cells. If you press SHIFT while dragging, you make a COPY of the original. While the cells are highlighted, the Edit Menu gives other options -- eg, Clear the selected cells.

This drag and drop operation can be turned On or Off on the Edit Menu.

Adjust Column width and Row height

You can change the size of the cells by dragging the cell bottom edge, and/or right hand edge, at the grey row or column title area.

Pictures in cells

Position the cursor on a cell, and then select INSERT PICTURE from the Edit Menu at the top. You can then browse to select a picture to insert into the cell. The picture will be resized to fit the size of the cell, but the full sized picture will be stored internally. We recommend you only use small picture files (eg. file size less than 20K) for inserting into the SpreadSheet. Larger pictures should first be resized using a paint package.

Change the size of the picture by dragging the cell width and height (see above).

Freeze/Release titles

It is sometimes useful to keep the Column and Row titles fixed while the rest of the sheet scrolls. From the Options Menu at the top of the Sheet, select the choice you require.

Print on Paper

The entire Sheet will be printed out on your printer. Because the Sheet can be larger than the paper, it will be printed in sections (you can set the printer to landscape format if you wish). Use the Print Preview and you can set up Header and Footer, page size, etc.

Import/Export

You can import your old spreadsheets from ABC5. You can import data in various other formats, including text files and Excel sheets. There is a function to import your customers, suppliers, or stock records to the spreadsheet (editing the spreadsheet will not affect the original accounts files).

It is also possible to export data in several ways including Excel, text file, HTML and XML.

From the File Menu at the top, select Export or Import, and then choose the required function.

Expect to do some fine tuning on imported data as other software may have slightly different features compared to ABC6.

11

Useful extras

Calculator, Notes,
Envelope Printer
Calendar/Diary

This chapter describes the very useful functions that you can use at almost any time, no matter what you are doing. They can be accessed from the Quick Access Toolbar at the top of the screen, and you'll also find them in various places throughout ABC.



This type of accessory was very useful in early versions of ABC running under DOS but these days Windows provides much of this functionality already. However accessories that link directly to parts of ABC are retained because they provide unique and useful function.

Noticeboard

When you startup ABC, the Noticeboard can be shown on the screen (or it can be turned off). Use the OPTIONS Menu (top right of screen) to change this setting. The Noticeboard is a useful place to leave a message for yourself or the next person to use the computer.

Calculator

This function allows you to use your expensive computer as a cheap calculator. Some useful functions are included for quick calculations or adding up a stack of petrol receipts. For example, to add or remove VAT from the figure you enter.

You can type on the keyboard or use the mouse to click the buttons on screen.

Print Envelope

The first tab page allows you to select envelope size, and choose whether to have your return address printed top left, and an optional small picture or company logo.

It is usually best to allow ABC to TIDY THE ADDRESS -- this means that any blank lines in the middle of the address will be removed and the remaining lines moved up. It makes the address look neater.

If you have called Envelope Print while looking at a Customer or Supplier Record Card, then that company's address should automatically have been filled into the name and address boxes on the Text tab page. You can edit these details or type a new address.

You may need to experiment with your particular printer to see which way round to insert envelopes.

Yellow Notes

Most screens in ABC have a yellow button marked NOTES. This is for your own use. View or edit a note about that ABC function. An experienced user could leave hints for the newcomer.

Diary/Calendar

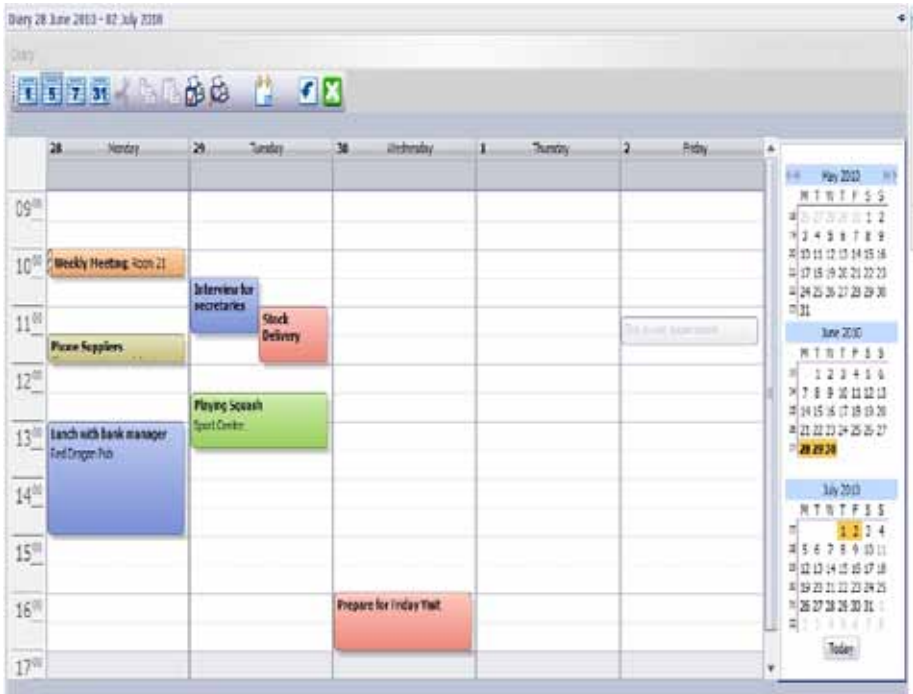
The Dairy/Calendar is a versatile and powerful tool for organising your appointments and reminders. You can colour code events and set alarms to remind at specified time prior to start (and there is a five minute snooze button).

Items can be set to automatically repeat every week, month or year (ideal for remembering birthdays or anniversaries). The Diary can be viewed in many different ways: eg. one day, one week, or a month at a time. any view can be printed on paper.

The diary can be set to automatically appear when you start ABC (use the OPTIONS Menu top right of screen to set this). The Diary will automatically auto-hide itself at the right hand edge of the screen. Just move the mouse over the little Diary Tab to make it slide open.

Operation of the diary should be quite intuitive. Right click on a Diary page and select New Event to create a new





appointment, or simply double click on a page. You can then fill in details of the appointment (event). If you click on an existing event you can edit it.

You can cut and paste or drag appointments to another time or day.

The Diary will normally automatically hide when you move the mouse away from it, but you can also click the blue down-arrow to hide the Diary, or click the green cross to close the Diary.

If you have closed the Diary, you can open it again any time by clicking the icon on the Quick Access toolbar (top left of screen). And if that icon is not visible, click the little down arrow at the right of the QA toolbar and tick the DIARY option. (this is a reminder that the QA toolbar can be customised to remove or add more items as you require).



Email

You can send an email to us here at ABC Control Tower using the Tools Menu (top right of screen) and select EMAIL TO ABC. This will automatically add your ABC package number and version number to the bottom of the email. Use this to make suggestions for new features or report a bug.

With Sales Invoices and Statements you can now email them to customers instead of printing on paper. For this to work you must enter each customer's email address onto their Record Card. Produce the invoice or statement in the usual way, and then in the Report Viewer select EMAIL instead of selecting PRINT.

ABC offers two different ways of sending emails. The best method is MAPI (which uses your own email system that is already set up on your computer -- if you have more than one, the default one will be used). With MAPI there is no need to set anything up in ABC (ignore the fields for Password etc).

In rare cases, if MAPI does not work for you, try ABC's own simple email system. The first time you use the ABC email function you will need to enter the details of your ISP MailServer and your UserName and Password. If you don't have this information to hand, contact your ISP.



The ABC email software does not add copies of emails to your usual email program, which is a disadvantage. That's why it is better to use MAPI if possible.

12

Backup

Backups and Snapshots

Backups and Snapshots sound similar but have different purposes: They can be selected from several places in ABC, and before doing anything “dangerous” (eg. MonthEnd) ABC will suggest making a Snapshot first.

When you exit from ABC, if you have not made a backup recently ABC will prompt you to do so now. You can turn this prompt off if you must -- but we strongly suggest you DO backup regularly.

Backups

Every hard disk will stop working sometime; maybe in 5 years, maybe tomorrow. To protect yourself against this, you must make copies of your information onto removable storage; these are your backup copies. Possibly the best method is to backup onto RAM drives (USB memory sticks) that simply plug into your computer. Second best method is CD or DVD. Other methods are available.

To protect against your premises catching fire, or theft, you should keep these backups in a separate building. To protect against faults that may be undetected for a few weeks, you need several different backup sets. Remember that backups contain all your business information, so keep them in a secure place.

Snapshots

Snapshots allow you to quickly make a copy of your Accounts information onto another folder on your hard disk. You can keep up to ten different Snapshots.

Because the Snapshots are held on your hard disk, it is very fast and convenient to use. But it does not protect you against hard disk failure or fire/theft -- so you also need regular separate Backups.

Create a Snapshot

ABC will display all existing Snapshots. Select one of the ten Snapshots

Positions to be used. You can write to a blank (empty) position or overwrite an existing Snapshot.

Snapshots are automatically labelled with the date and time that they were created, and you should also enter a note to describe this Snapshot.

Restore a Snapshot

This function will copy the Snapshot accounts files back into your real accounts -- this overwrites the existing current accounts.

ABC will display all the existing Snapshots. Select one of the available Snapshots to use. Do not proceed unless you are sure you want to replace your existing accounts with the Snapshot copy.

Other companies

The Snapshot and Backup functions operate on the current company you are working on. If you have set up several companies in ABC, you must Backup each separately.

Create a Backup

Plug the removeable device (eg USB stick) into the computer (or ensure there is a blank CD in the drive) before you select the Backup function, because ABC starts by scanning all drives attached to the computer and only lists those it can write to.

Select which drive to Backup onto (this could be a network drive). The Backup will be stored in a folder labelled with the date and time. This means you can keep many different backups on the same external drive or memory stick.

Everything gets backed up (files, text, spreadsheets, etc).

Restore a Backup

ABC checks all drives attached to the computer and displays the suitable Backups that are found. You can select one of these to restore.

You can also choose which items to restore, eg text, account files, etc.



In earlier versions of ABC6 the Backup function was simpler and shared the screen with Snapshots. The new Backup is a separate more powerful function that cannot read the old backups. So we have left the old Backup's Restore function on the Snapshot page in case you need an old backup. .

13

Installation

How to install ABC onto your computer.
How to update your programs.

ABC will run on any computer which is PC compatible and has Windows NT, XP, Vista or Windows 7, 8 or 10.

Installation

Place the CD into your CD drive. Use MyComputer, and “browse” to the CD drive (often this will be drive D) to view the contents of the CD.

Double click on the installation program to run it.
Typically this will be called SETUP or ABC6 INSTALL.

Follow the instructions on the screen.
(NETWORK version? See separate ABC Network Manual)

Version number

To see the Version Number and date of your ABC programs, select the Tools Menu (top right of the screen) and then SHOW VERSION. If you are ringing up for help, it is one of the things we will ask you for.

If your programs are over 3 months old, we strongly recommend you obtain an Update, either from our website www.ABC6.co.uk or contact us for a disk. The latest programs will have many enhancements and improvements (suggested by users of ABC); and of course any reported bugs will have been fixed.

Registration Key

Although you can begin fully using ABC immediately after purchasing it, you need to Register the package within a few weeks. Do this by entering your Registration Key and Serial Number.

Tools Menu (top right of screen) > Register.

The Registration Key is normally supplied with the package, but can be obtained from ABC Direct Sales ([page iv](#)) if you can't find it. If you have the ABC package on 30 day Sale or Return, or a Trial version from the website, we do not supply the Registration Key until you have paid for the package. ABC will work happily without this key for a couple of months, so there is no urgency.

There is an option to print out your Company Name and address on paper. We recommend you post or email these details to ABC Software so we can add you to our mailing list (these details will not be released to anyone else). With an accounts package it is particularly important that we can notify you if accounting or VAT rules change, or bugs are found and important updates become available. We will not give your details to anyone else.

Program updates

An UPDATE contains the latest version of the programs. We are tirelessly working to fix bugs and enhance the features of ABC. Updates are brought out every week or two. These can be downloaded from our website, or for a small charge we will post you an Update CD.

Automatic Updates

We recommend you set ABC to automatically update itself from our website (See Tools Menu, top right of screen -- tick AUTO-UPDATE). Each time you start ABC it will check the website for new software, and offer to update itself -- this typically only takes a few seconds.

Updates are provided free while your After Sales Support is valid. If you do not have Support but want an update, you can pay a few pounds on our website for one month's Support (allows you to download updates for a month), or contact us and for a similar amount we will post you the latest Update CD. Support includes telephone help.

User Forum

There is a free User Forum on our website where you can read comments and questions/answers from other ABC users. Only registered users of ABC are able to write messages on the Forum, but any casual visitor can read them. You can get to the Forum using the Tools Menu (top right of screen).

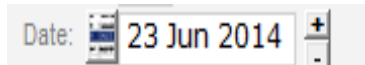
14

Reference

How to operate ABC:
the common functions

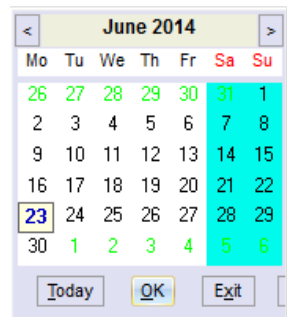
Select a Date

Enter a date in the format DD MMM YYYY (eg. 23 Jun 2014) Shortcuts are acceptable, such as 23 jun 14, 6/23/14



To use a popup Calendar either click on the button or press F8. You can then select a date by clicking on the Calendar. The buttons at the top move to previous or next month.

ABC will sometimes restrict the range of dates you can enter -- for example you can't add new transactions to a previous month's accounts. Typically the date entry will turn red to show the date is not acceptable -- try a different date.



Select a Heading

You can enter a valid Heading Code (eg 1121) if you know it, or leave it blank (or press the little button) to see a popup list of Headings to choose from.



You can cursor up/down, use PageUp/Down, or use the mouse to scroll up or down. Click on the column titles of this list to sort the list.

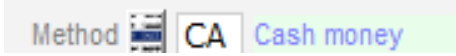
Select a Heading by clicking on it, or press ENTER.

ABC may restrict the Headings on the list to only show those that are suitable for the current task. eg if you are selecting a bank account, only the Bank Headings will be displayed.

Select a Payment Method

Enter a code for the payment method (eg. CQ for Cheque) or leave blank (or click the little button) to see a list to choose from.

ABC may only display methods applicable to the current task.




The Payment Method and Payment Heading Code may affect each other. For example, if you are making a payment in cash, methods like Direct Debit or Credit Card will not be displayed.

Select a VAT Code

Enter a code for the VAT rate applicable to this transaction (eg. 1 = standard rate). Leave blank (or click the button) for a list of VAT Codes to choose from.

Move the mouse of the HINT column to see a tooltip giving advice about each line. These “hints” can be customised by you -- [page 21](#).



Code	% Rate	Description	Hint
0	0	Zero Rate UK	
1	20	Standard Rate UK	
2	15	Rate 2 UK	
3	7.5	Rate 3 UK	
4	0	Zero Rate EU	
5	20	Standard Rate EU	
6	15	Rate 2 EU	
E	0	Exempt from VAT	
N	0	Not applicable for VAT	

Enter amount of VAT

In many places ABC can calculate the amount of VAT for you. For example in the CashBook, after you have entered the total amount and the VAT code, you can press F8 (or click the down arrow) and ABC will calculate and fill-in the VAT Amount for you. You can edit this if you wish.

Find a Record

There will be many occasions when you need to find a Record Card, for example select a Customer Record in order to invoice them. The Find panel appears at the left of the Record Card, and shows a list of records. Click a record to select it.

Click a column header (in this example, Acct, Key, or Company) to sort the list into that order (click again to reverse order the sort).

You can apply a filter to select just a group of matching records by entering some text in the box. The list will then only show matching records. Click the SHOW-ALL button to cancel the filter and display all the records again.

There are vcr type buttons under the list, allowing you to jump to the Next, Previous, First or Last records -- These relate to the current sequence determined by Sorting and filtering.

Acct	Key	Company
1	GRE...	Green Brothers Ltd
2	WHIT...	White Paint Ltd
3	BRO...	Brown & Sons (Plumbers)
4	GRE...	Greys Bakery
5	YELL...	Yellow Building Maintenance Ltd
6	BLA...	Blacksmith Associates
7	PINKSF	Pinks Florist
8	PURP...	Purple And Violet Solicitors
9	BLUE...	Blue Parrot Hotel
10	TREE...	Orange And Peach Trees (1994)
11	GOL...	Gold Pieces Cattery
12	RED...	Red Bookstore Partnership
13	SILV...	Silver Double Glazing Ltd
14	OFF...	Offenwhyte Laundry
15	SAF...	Saffron Curtains Ltd
16	DAR...	Dark and Grey Ltd
17	MUS...	Mustard Yellow Partners

Date	Type
14 Jan 14	Invoice
17 Oct 13	Invoice
06 Sep 13	Money Re
19 Sep 12	Cr Note

When looking at Customer or Supplier Records, you could also find a record by entering an invoice number (eg. SL4563, or PL280911) or the account number (eg. #34, or #481). The prefix # or SL must be entered. If you tick the ONLY SHOW UNPAID box, only customers/suppliers with outstanding invoices will be shown. And you can mark records as Inactive, and a button on the ribbonbar allows you to Hide/Show the Inactive records.

Apply a Filter to select Records

At various times you will want to filter the Records, for example for a Report or Label print, or for Global Change.

SQL -- a brief introduction

ABC uses SQL for selecting Records. SQL is a programming language that databases understand. It can be easier than you think to make simple selection requests (queries). For example, to request customer records where the account number is greater than 50 and less than 300, and the 3rd line of the address is the word "London", the SQL expression would be:

```
WHERE custACCT > 50 AND custACCT < 300 AND custADDR3 = 'London'
```

If you have a particular requirement for filtering records, you can ask your Support Company (or ABC Direct Sales) to tell you what to type in. Experts will probably be familiar with simple SQL queries, and many books are available.

ABC has a SQL Wizard that can assist in creating SQL expressions. Experts can then edit the results for further fine tuning.

Edit a Record Card

Whenever there is a Record Card on the screen, there will usually be buttons on the ribbonBar which include the options.

EDIT allows you to change (alter, change) the information in that Record Card.

ADD will create a new (blank) Record Card for you to edit.

When you select EDIT (or ADD), the screen will appear with the cursor flashing in one of the Fields. You can now edit that Field.

Editing a Field is similar to editing text. You can type over any information in the Field; or use CURSOR LEFT or CURSOR RIGHT to move left or right. To Delete one character, use the BACKSPACE or DEL key. To switch between insert and overtype mode, press the INS key.

If you change your mind, press ESC to UNDO any changes.



Experts may get frustrated by having to click EDIT in ABC before they can change anything. This feature can be turned off so you do not need to click EDIT first.
Accounts Utilities > Edit Company Params.

Address Notes Options Charts

2 **White Paint Ltd**

Key: WHITEP

Company: White Paint Ltd

Address: Snow White House
Brush Street
Smoothcote
Shropshire

Postcode: SB6 3NN EC UK

Contact: Wilbur Thread

Phone: 0987-65432

Fee:

Mobile: 0789-9876 7890

Rate 1:

Rate 2:

Tot. Balance: 0

Year to Date: 152.75

Credit Limit: 0

Last Year: 270.25

Email:

Website:

Show History

Date	Type	Folio	Amount	RunningTot	Outst	Notes	Gen Ref	Paid Ref	VAT
08 Nov 13	Money Rec'd	CB009711	-105.75	-105.75	-105.75		3B		0
19 Oct 13	Invoice	SL012065	105.75	0	105.75	O/No 7823HH			15.75
30 Sep 13	Money Rec'd	CB009700	-200.00	-200.00	0				0
15 Jul 13	Opening Bal	JN004002	200.00	0	0	Opening Balance			0
27 Jul 13	Money Rec'd	SL012050	-47.00	-47.00	0	cheque	000580		0
27 Jul 13	Invoice	SL012050	47.00	0	0	Garden			7.00
25 Jan 13	Money Rec'd	CB009403	-117.50	-117.50	0	Cheque	000546		0
11 Jan 13	Invoice	SL011927	117.50	0	0	garden			17.50

Move to another Field

When you have finished editing a Field, press ENTER. Or use CURSOR UP/DOWN to move to another Field. (of course you can also use the TAB key to move between Fields, or simply click in a Field with the mouse).

Finish editing the Record

If everything is correct, click SAVE. If you want cancel the changes, click CANCEL.

You can click a button with the mouse, but it may be faster to press ALT-S to Save, ALT-C to Cancel (old ABC users can still use F5 to SAVE, and ESC to cancel).



A Grid (ie. Table) of data

The versatile *grid* is used throughout ABC for viewing and editing data, like the example below.

Drag a column header here to group by that column.						
Date	Folio	Notes	Net Amnt	RunningTot	VC	VAT
22/01/2014	SL012057	Gift Set type 12	39.66	39.66	1	6.94
06/09/2013	SL012058	Table Lamp, 12 Inch	180.00	219.66	1	31.50
22/09/2013	SL012060	Valve Type JW1203 Brass	47.72	267.38	1	9.54
13/09/2013	SL012062	Dining Chairs, Mahogany	80.00	347.38	1	14.00
06/10/2013	SL012066	Wall Light Unit PX44	35.39	382.77	1	6.19
06/10/2013	SL012066	Valve Type JW1203 Brass	81.24	464.01	1	14.22
11/10/2013	SL012067	Consultancy work	250.00	714.01	1	43.75
17/10/2013	SL012068	Dining Chairs, Mahogany	600.00	1314.01	1	105.00
11/10/2013	SL012069	Gift Set type 12	71.94	1385.95	1	12.59
26/10/2013	CB009704	4 tins paint	21.28	1407.23	1	3.72
12/10/2013	CB009705	Repairs to chair	10.68	1417.91	1	1.87
00:00:00	SL012072	Gift Set type 12	23.98	1441.89	1	4.20
17/11/2013	SL012074	Dining Chairs, Mahogany	120.00	1561.89	1	21.00

If you view your Customer Records in a grid, each row is one Record, and each column displays a Field. You can customise most grids by swapping columns around and changing their widths, sorting into different order, creating groups of records, as described below:

Click the mouse to select a row (it then becomes highlighted), or use the cursor keys to move the highlight up or down. The highlighted row is called the Current Row.

Move or Size columns

Use the mouse to drag a column title to a new position and drop it there -- the column will then move to that position. If you drag the dividing line between column titles, you can stretch a column bigger or smaller.

Print part of the Grid

If you highlight a few lines in the grid, you usually will find a menu choice to print those lines on paper (eg. File Menu > Print Selected). To select ALL the rows in the grid, press CTRL + A.

Edit the Grid

Some grids can be treated like a spreadsheet -- you can click anywhere and simply edit what you like. Others may only let you edit one line at a time -- normally you can double-click on a line (or press ENTER when it is highlighted) to begin editing.

Group records

You can group the records (rows) in the Grid together to make it easier to find things or spot trends. Simply drag a column title into the area above the grid, and the records will be grouped based on that column. If you want a sub-group, you can then also drag another column title into the area.

To cancel grouping of records, drag the column title out of the area above the grid and drop it back on the grid.

This temporary grouping function is just for viewing records on screen. It does not affect the actual order of records in the file.

Sort the Grid

Usually you can simply click on a column title to cause the Grid to resort itself in that order -- click on it again to sort in reverse order.



Some grids can not be changed in this way. Some grids will remember the changes you make and stay like this until you change them again.

Print Email Print Setup 2/8

My Company Name

NL History

11 Dec 2013 17:11 Page 2

Date	Note	Folio	Amount	Code	VAT
1131 Sales in Department 3					
15 May 13	LuxHessef	CB009582	10.00	1	1.75
22 Sep 13	Greys Bakery (4) — Filing work	SL012080	12.50	1	2.10
12 Oct 13	White Paint Ltd (2) — Replacement coasters	SL001992	115.40	1	21.0
23 Nov 13	Pink's Florist (7) — Consultancy Work	SL012075	300.00	1	52.50
27 Dec 13	Greys Bakery (4) — Work as per your Order 443	SL012082	125.00	1	21.88
12 Dec 13	Brown & Sons (P) (3) — Consultancy work	SL012080	15.00	1	2.62
			577.90		80.85
1171 Sales in Department 3					
22 Sep 13	Grass Engineer (20) — Misc Garden Items	SL012059	12.55	1	0
05 Sep 13	Blue Parrot Hot (9) — Contract visit	SL001988	100.00	1	17.50
05 Sep 13	Greys Bakery (4) — Contract visit	SL001988	100.00	1	17.50
19 Sep 13	Orange And Peac (10) — Consultancy Work as attached letter	SL012083	250.00	1	37.5
19 Oct 13	White Paint Ltd (2) — Contract				1.75
17 Nov 13					50

Analysis of Headings

Code	Description	Movement
1111	Sales Dept 1	2,757.32
1121	Sales Dept 2	3,634.72
1131	Dept 3	577.90
4231	Accountant Fee	364.18
9111	PURCHASE CONTROL	1,224.03
9211	VAT CONTROL	

Analysis of VAT

Code	Percent	Goods	VAT	Total
0	0%	-10.11	0.00	-10.11
1	20.00%	7,111.58	1,224.03	8,335.61
11	0%	-104.76	0.00	-104.76
		6996.71	1224.03	8220.74

Key to Transaction Types

- B - Journal Balance (ie from Business to Bank)
- 0 - Balance OPENING BALANCE (Normal Ledger)
- 1 - Purch Ledger INVOICE (or CR Note or Debit)
- 2 - Sales Ledger INVOICE RECEIVED
- 3 - Sales Ledger INVOICE PAID
- 4 - Purchase Ledger MONEY PAID
- 5 - Purchase Ledger MONEY RECEIVED
- 6 - Cashbook PAYMENT (eg Post Office)
- 7 - Cashbook RECEIPT (eg Landry Sale)
- 8 - Sales Ledger INVOICE (or CR Note or Debit)

✓ **ABC6 Data Check All OK**

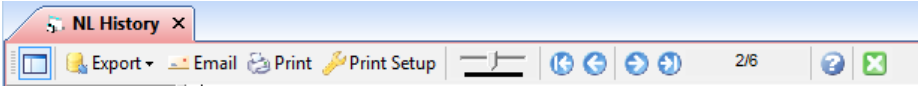
Features of ABC reports

Page 112 illustrates many features of the ABC bookkeeping reports.

- 1 -- The Report Viewer Toolbar -- see next page for details.
- 2 -- The cursor. If you hold down the left mouse button and drag the cursor, the report also moves. This is a quick way to scroll up, down, left or right. Or you can use the cursor keys.
- 3 -- Your Company Name at the top of every report ([page 77](#))
- 4 -- Your company logo (or any small picture you provide). Or no picture at all. ([page 77](#)).
- 5 -- The report title describes this report and includes a note of any range of values used; also shows if this is a Month End final report.
- 6 -- The current Date and Time are printed at the top of each report. This shows when the report was printed; it does not refer to the contents of the report.
- 7 -- The page number.
- 8 -- The body of the report.
- 9 -- The end of the report usually shows a summary of Nominal Ledger movements (Heading Analysis)
- 10 -- A summary of the VAT may be shown at the end of a report.
- 11 -- To explain abbreviations used in a report, a key is printed at the end of some reports.
- 12 -- While printing some bookkeeping reports, ABC can cross-check the integrity of the data. This is shown at the end of the report in the DATA CHECK.
 for OK, or if a problem was detected (with brief note of the error).
- 13 -- Some reports include an optional Table of Contents. If you click on an entry in this Table, the report jumps straight to the page containing that entry -- very useful if there are many pages. You can hide or show the Table of Contents.

The Report Viewer Toolbar

This appears at the top of the report Preview, and provides functions to change page, zoom in or out, hide or display the Table of Contents, and send the report to a printer or fax modem. There is an option to Email the report, and to export to disk file as PDF, HTML, or text. You can click the buttons, or use the keyboard (eg. ALT-P to select Print, the Plus/Minus keys to zoom, PgUp/PgDn keys to change page).



- ◆ Table of Contents -- the first (left) button allows you to hide or display the Contents. (Not all reports have a Table of Contents). Click on an entry in the TOC to jump to that page.
- ◆ Export will create a disk file in your choice of HTML, PDF, or CSV TEXT format.
- ◆ Email allows you to send this report by email.
- ◆ Print -- Allows you to select a printer, and range of pages to print.
- ◆ Zoom size slider -- Change the display size on screen.
- ◆ Buttons allow you to jump to First or Last, Next or Previous page.
- ◆ Report pages -- Shows the current page, and total pages (eg. 1/3 indicates you are on page 1 of a 3 page report).
- ◆ Help -- Displays the on-screen User Manual section showing how to use the report viewer, with general hints and tips.
- ◆ Close -- (green X) Close the report viewer (exit from the report). You can also close a report by pressing the ESC key.



For Sales Invoices and Statements an additional TEXT-PRINT button will appear. This allows you to send text-only printing (eg for a dot-matrix printer) using your own layout.

15

Glossary

Technical words explained

ACCOUNT	A card containing a Customers Name, Address and other details is called a Customer Record Card by computer people; but a bookkeeper will call it the Customer Account. You can choose which you prefer.
ALLOCATE	In ABC you mark an Invoice as “paid” by allocating a money payment (or a Credit Note) against it.
BALANCE	The current total of an account (record card). eg. The amount a customer owes you is called their balance.
CASH	not Credit. Can include cheques, Direct Debits, coins, bank transfers, etc. But no invoice or deferred payment.
COLUMN	See FILE. In a Table, Columns are the Fields of Records.
CREDIT	An item is not paid for immediately, but is obtained on credit. ie. not cash
DATA	Any information (such as a name and address, or a letter) can be made to sound more important by calling it data.
DATABASE (.MDB)	ABC stores data on disk in MDB files, using the MS JET engine (like Access). We define a Database in this context as a huge diskfile that contains all of the various ABC accounts information. Inside the Database we can think of the data as being stored in separate Files or Tables. ABC also has several other databases, for example one stores all the Files you create with FILING.
DEFAULT	The suggested normal option. To make life easier for you the computer will often display a default entry (eg. today’s date) which you can accept or change.
DIRECTORY	See SUB-DIRECTORY (Also called a Folder).

FILE RECORD and FIELD and TABLE)	The Customer File contains a Record Card for each customer. Each card stores details of their Name Address Telephone etc -- and these boxes are called fields; eg. the <i>Postcode Field</i> . (more recently people have started calling Files <i>Tables</i> -- eg. the Customer Table, and the Fields are Columns in the Table). You enter information into Fields on the screen (or Columns in a Table/Grid)
FOLDER	Another word for a subdirectory or an area of the disk.
PATH	A file Path is the full disk address leading to that file ie. starting from the main (or root) directory, down through all the sub-directories to reach that file. (see also SUB-DIRECTORY)
POST	Entering a transaction is sometimes called “posting” the transaction.
PROFORMA	A quotation in the form of an invoice, showing the price, details, delivery, of the order. Not part of the accounts.
PROPERTY	In computer terms the parameters (or option settings) of an item are sometimes called its “properties”.
RECORD	See FILE. (in a Table you can think of a Record as one line or Row in the Table).
RIBBONBAR	The multifunction toolbar across the top of the ABC window, which displays buttons and functions relevant to the task you have selected.
SNAPSHOT	A copy of the Account Files, frozen at the moment the Snapshot was made. Similar to Backup. See ARCHIVE.
SQL	This stands for Structured Query Language and is the modern programming language for getting information in or out of a database. ABC uses SQL internally.
SUB-DIRECTORY	Generally called a “Folder” these days. A small section of your hard disk. Instead of storing all files in one area, it makes life much easier if each program uses its own sub-directory.
TABLE	For many years we have used the word “File” to describe a collection of Records. However; in the database system that ABC now uses this collection of Records is called a “Table”.
TRANSACTION	When you buy something or sell something you are performing a transaction. Other transactions include paying wages to someone or taking money to the bank.
UPDATE	To bring something more up to date. For example to install a newer version of a program.

16

Trouble-shooting

Common Problems

Check the following before calling in the engineer.

Problem	Possible Cause and Remedy
You have plugged in the computer system and switched on but nothing appears on the screen.	Check equipment switches are all ON. Check fuses in mains plug(s). If a fuse blows more than once don't use equipment but call service engineer.
Various strange symptoms	Mysterious computer glitch; eg. power surge or loose connection. Switch off and check all connections, plugs and sockets are secure. Wait 1 minute before switching on again.
Pressing a cursor key prints a number on screen, or unexpected capital letters.	You might have number lock or capitals lock selected. Press the NUM LOCK key or CAPS LOCK key to turn it off.
Screen display appears normal with flashing cursor but nothing happens when you press a key, or move the mouse.	Are you pressing an allowed key? Try pressing ESC. Keyboard may have become unplugged. Mouse may have become unplugged.
After switching on the computer it reports Invalid Boot disk or similar. Or computer freezes during startup.	Remove any disk from the floppy drive or CD drive. Switch everything OFF for 1 minute and then try again.
Customer or Supplier Record remains Locked (eg. after a crash or power cut)	Edit the Record and untick the "Locked" box

Problem	Possible Cause and Remedy
Reports or letters are OK in the on-screen Preview but nothing appears on paper when PRINT is selected.	Check the following: Printer (paper; ink; on-line); cables and connections; Open the Printer in Windows and check settings). If you are on a network; check the server and the PC with the printer connected.
ABC won't run, or you get an error message like "Cannot create server" or "Automation Error", and the program stops.	If you are on a network ABC cannot run on Workstations unless it can access the data located on the server. Check the server and network. Update the software from our website: this usually fixes this type of error (caused by windows registry or file version confusion).
Main Menu button does not work.	Use ALT-M to open the Main Menu (this also gets the button working again).

Program errors

We are confident you will not find anything serious wrong with the programs but it is likely there are minor errors (bugs) remaining. It is impossible to be certain that any complex computer program is free from bugs.

If you do suspect a problem of this type please make a careful note of what you were doing; what happened; what appeared on the screen; and then email us with those details.

UNLESS WE CAN REPRODUCE ANY FAULT YOU REPORT we cannot find it or fix it! So please:

- a) check that you can reproduce any problem (Intermittent troubles; or symptoms that cannot be reproduced are usually due to the computer equipment or power supply. or interference from other software).
- b) give us enough information so that we can follow the same path.

We do want to hear from you, and are very grateful for reports of any problems. We try to fix any bugs within 24 hours.

Updates containing the latest version of the programs are always available from the support people, on our website, or by post from us.

If your programs are a few months old and you find a problem, the first thing to try is getting the latest program update.

Index

A

ABC5	
Import old file	84
Import accounts data	24
ABC, overview	11
Account	
Customer, Supplier, Nominal.	25
Delete Nominal account	32
Nominal, add new	30
Nominal Ledger	15
Accountant, letter to	76
Accounting Year	78
Account Number	
Customer	26
Accounts, current Month.	74
Accounts Files, clear	18
Add record card.	25
Address, edit company	21
Advice Note.	63
After-Sales Support.	2
All data, clear accounts.	18
Allocate, mark paid.	43, 47
Analysis Headings	
Groups.	16
Setting up	15
Archive (Snapshot).	103
Auto-Update	106

B

Backup	103
Balance Forward	
Customer record	28
Bank Charges	52
Banking	53
Bank Reconciliation	54
Bookkeeping month.	73

C

Calculator	99
Calendar/Diary	100
Calendar to select date	107
Case Quantity	
Stock Record	36

Cash Sales.	41
Cash VAT Accounting	22
Cash-with-Order Invoice	61
Chart of Accounts, print	15
Checklist to set up accounts	13
Cheque, print	48
Clear out accounts	18
Close a window	5
Code	
Heading (Nominal account)	31
Stock.	34
Code, VAT.	21
Company, create other	80
Company name and address	21, 77
Contra payment.	44, 50
Copy.	5
Correction	64
Correction, adjustment	40
Credit, N/L account	31
Credit Note, sales	63
CSV, Filing export.	84
CSV, report output	65, 116
Customer	
Account	25
Add new.	19, 26
Delete	29
Delivery Address	28
Edit record	26
Mark invoice paid (allocate)	43
Opening Balance	54
Price group	29
Record Card	25
Statement, label, envelope	29

D

Date, entry.	107
Debit, N/L Account	31
Delete	
a file in Filing	86
Delivery addresses	
Customer Record	28
Delivery Address, invoice	62
Diary/Calendar	100
Discount, money received	42
Discount, trade customer.	29

Dot-matrix printers 2, 116

E

Edit
 Analysis Heading (Nominal) 30
 Company address 21
 Record card 25
 Record Card 110
 Stock record. 34
 text using Typing 91
 using Filing 81
Email functions 102
Envelope
 Print 100
 Print for customer. 29
Estimate 64
Exit 5

F

Field
 autonumber, autodate. 82
 Customer record 26
 Nominal Ledger account 30
 Stock record. 34
Figures only, clear accounts 18
Filter, select records. 110
Find a record 109
Folio number 37, 78
Folio Number 51
Folio number, set 18
Formulae, spreadsheet 97
Forum, user 106

G

Global Change, Filing 85
Goods In or Out, Stock 57
Grid (table) of data 112
Groups, Headings 16

H

Hardware required 2
Heading
 Add new. 30
 Delete 32
 required by ABC 32
Heading Code 15
Heading, debit or credit. 31

Heading entry 107
Headings
 Groups. 16
Help, After Sales 2
Help, on screen 7
Hot Keys (shortcuts) 4, 5
HTM output. 65, 114

I

Import
 ABC5 data file. 85
 Accounts from ABC5 24
Installation 105
Internal adjustments 38
Inventory (see stock) 33
Invoice
 Cosmetic adjustment 22
 Enter old invoices. 20
 Logo or Message. 60
 Mark paid 43
 ProForma 63
 Receive money 41
 Reprint old 29
Invoice at Zero VAT. 61
Invoice number, set. 18

K

Keyboard shortcuts 5
Key, registration. 106

L

Label
 Print for customer. 29, 67
 Print your own design 87
Letter to the Accountant 76
List of Headings, print 15
Logo
 for top of reports 77
 on invoice 60
Log On, or Log Off 8

M

Mail-merge 93
 Print letter for customer 29
Mail-Merge, customer. 67
Main Menu 6
Margins, Typing. 91

Markup	
Stock calculation	33
MDB database	81
Method, select	108
Mistakes	10
Mistakes, correction	40
Month End	12, 73
Month, set accounts month. . .	18
Mouse, using	3

N

Network ABC	105
New Customer, add.	26
Nominal	
Account	25
Add new account	30
Journal entry (Transfer). . . .	55
link to spreadsheet	97
Transfers (direct entries) . . .	40
Nominal Ledger	
Accounts	15
Opening Balance	54
Setting up	15
Note, yellow.	100
Noticeboard	8, 99

O

Opening Balance	
Customer or Supplier	19, 54
Nominal Ledger	40, 54
Open Item	
Customer Record	28
Other Companies	80
Overview of ABC	76

P

Password	8
Passwords	78
Paste	5
Pay money.	40
PDF, output	65, 116
Petty Cash	47, 51
Price Group, customer	29
Print	
Cheque	48
Design your own labels	87
Design your own report. . . .	88
Envelope	100

ProForma Invoice	63
Program update	106

Q

Quick Access toolbar	9
Quick Access Toolbar.	99
Quotation	64

R

Receive Money	40
Reconcile bank.	54
Record	
change properties	82
How to Find	109
Stock (Inventory)	33
Record Card	25
Nominal ledger	30
Refund, from supplier	50
Refund to customer	44
Registration Key.	8, 106
Remittance Advice Note	47
Report	
Cashbook, Bank	71
Design your own	88
Features of ABC reports. . . .	115
Logo for top of.	77
Nominal Ledger	70
Output as HTML, PDF, CSV . . .	65
Sales, Customers	66
Stock.	68
Supplier, Purchases	67
VAT return	70

S

Save or Cancel, Edit	111
Screen colours	9, 80
Set folio numbers	18
Settlement Discount	78
option on Customer record . . .	28
Snapshot	103
Sort grid in order	113
Spell Check, Typing.	92
SQL	
select record in Typing	94
SQL, select records	110
Standing Orders.	52
Start using ABC.	13

Stock	
Delete record	38
Goods IN or OUT	57
Recalculate price	34,37
Record card	34
Text-only record.	34
Value.	57

Supplier	
Account	25
add new	19
Opening Balance	54
Payment to	47
Record Card	25
Unpaid bill	40
Support, After Sales	2
Support, User Forum	106

T

Table (grid) of data	112
Terms	
Customer Record	29
Text-only stock record	34
Tidy the address, envelope	100
Transactions.	39
Transfers, N/L	53, 55

U

Unit Cost, Stock.	36
Unpaid bill	
mark paid	47
Unpaid Bill	40
Update, software	106
Update Stock, unpaid bill	59
USB sticks.	100
User Forum	2, 106

V

Value, stock	57
VAT	
Cash Accounting	22
codes	21
Edit VAT rates.	21
Enter refund.	46
General notes	22
Inclusive prices	29
Invoice at zero VAT	61
Notes for VAT inspector	23
previous accounts.	19

Print return	23
reports, Return	70
VAT Code, enter.	108
VAT-inclusive Prices	61
VAT-only Invoice	59, 61
VAT Registration, set	18
Version Number.	105

W

Wages	52, 56
Write-off as discount	42

X

Y

Year, accounting.	78
Year End.	75
Year, set accounts year	18
Yellow Notes	100

Z

Zero, invoice at zero VAT.	61
------------------------------------	----